

Lima Study Pinpoints Historic Buildings, Residents' Desires

With a survey of the historic buildings in the Lima township, the University of Michigan students have found that the historic buildings in the township are in good condition. The survey was conducted by the University of Michigan students, who were assigned to study the historic buildings in the township. The survey was conducted by the University of Michigan students, who were assigned to study the historic buildings in the township. The survey was conducted by the University of Michigan students, who were assigned to study the historic buildings in the township.

The survey was conducted by the University of Michigan students, who were assigned to study the historic buildings in the township. The survey was conducted by the University of Michigan students, who were assigned to study the historic buildings in the township. The survey was conducted by the University of Michigan students, who were assigned to study the historic buildings in the township.

The survey was conducted by the University of Michigan students, who were assigned to study the historic buildings in the township. The survey was conducted by the University of Michigan students, who were assigned to study the historic buildings in the township. The survey was conducted by the University of Michigan students, who were assigned to study the historic buildings in the township.

The survey was conducted by the University of Michigan students, who were assigned to study the historic buildings in the township. The survey was conducted by the University of Michigan students, who were assigned to study the historic buildings in the township. The survey was conducted by the University of Michigan students, who were assigned to study the historic buildings in the township.

The survey was conducted by the University of Michigan students, who were assigned to study the historic buildings in the township. The survey was conducted by the University of Michigan students, who were assigned to study the historic buildings in the township. The survey was conducted by the University of Michigan students, who were assigned to study the historic buildings in the township.



THE SUTTON HOUSE at Scio church and Guenther Rds. was one of the Lima township residences investigated by the two University of Michigan students in their survey of historic homes in the area. A number of contributing factors add to the setting of this to form a good example of the "rural environmental quality" they stressed.

WEATHER

High	54
Low	44
Wind	10-15
Clouds	Partly Cloudy

The Chelsea Standard

ONE HUNDRED-FOURTH YEAR—No. 20 14 Pages This Week CHELSEA, MICHIGAN, THURSDAY, NOVEMBER 1, 1973 15c per copy SUBSCRIPTION: \$4.00 PER YEAR

United Way Campaign Hits 95% of Goal

A whopping \$12,375.46 collected by the industrial canvassers of the United Way campaign in the past week has provided the local group with a giant step toward reaching its 1973 goal of \$25,000.

Drive chairman Mrs. Robert Riemschneider reports that Jack Barnes, industrial chairman, has turned in a total of \$19,275.46 thus far, with a few more small plants remaining to contribute.

Wording of Ballot Decided By Board

Final wording of the bonding to be voted upon by electors of the Chelsea School District Dec. 17 was decided Monday night at a special meeting of Chelsea Board of Education.

The proposition for the \$4,800,000 building program will read: "Shall Chelsea School District, Washtenaw and Jackson Counties, Michigan, borrow the sum of Four Million Eight Hundred Thousand Dollars (\$4,800,000) and issue its general obligation unlimited tax bonds therefor, for the purpose of erecting, furnishing, and equipping an addition or additions to and remodeling of the following school facilities: the Chelsea High School, North Elementary school and the South Elementary school erecting, furnishing and equipping a natatorium, either as a separate facility or as an addition to an existing school building; remodeling the Middle School Building; constructing and equipping a maintenance and central storage facility; acquiring additional land for site purposes; constructing and equipping playgrounds; constructing and equipping improvements to the outdoor physical education and athletic facilities; and developing and improving the sites?"

The bonds will be repaid in the usual means by levying ad valorem taxes, which are regular property taxes figured according to assessed valuation of property. The Board of Education is given responsibility to annually levy sufficient taxes to provide for the principal for a given year. The bonds will mature in 26 to 30 years, with interest determined by public sale but on no account to exceed the maximum legal interest rate.

Library Story Hour Begins Next Tuesday

In such an electronically dominated video age as the one we live in, it might be simple to plunk the kids in front of the television set for the day.

Let them enjoy soap operas and mediocre cartoons and adult-level talk shows and repetitious games. But somehow, it's not at all the same as the good old-time stories that entertained youngsters who grew up before the magic TV set was in everyone's living room. Remember the kind of stories that people told you—the kind of stories you read in little books with a lot of fire trucks and dogs and talking animals inside.

Winter Recreation Program Needs Instructor Help

With fall Recreation Council activities barely underway, the winter program is already on the drawing boards.



A STATE CERTIFICATE OF RECOGNITION was presented to the family of J. Vincent Burg, I, for its donation of more than 40 plaques of Indian artifacts to Waterloo Recreation Area's planned nature center, which should be completed in the spring of 1975. The collection of more than 2,000 artifacts from the Chelsea area was a personal hobby of the late Mr. Burg, and have variously been displayed in the Chelsea Drug store and The Pub. Above, Glenn Kraai, park executive of the divisional office of Michigan State Parks, holds one of the plaques which will be on display. Kraai presented the family of Mr. Burg, represented by J. Vincent Burg, II, center, with the state recognition certificate at ceremonies at Waterloo Recreation Area last week. Tom Hodgson, park naturalist, is at right.

Burg Indian Artifact Collection Given For Display at Planned Nature Center

When Chelsea Drug was owned by the late J. Vincent Burg, I, ingenious farm boys were well aware that all it took to entice a bit of free candy away from the proprietor was to show up with a pocketful of "arrow heads" that had turned up in the day's plowing.

For particularly interesting specimens, the reward was even better: occasionally Burg would substitute the artifacts for hard, cold, cash payment for medicine. Although he termed his interest just a hobby, Burg's efforts were not entirely amateurish. One of the most abundant sites of his efforts, an ancient fire pit near Crooked Lake in Sylvan township, was confirmed by University of Michigan archaeologists as the source of primitive tools fashioned by native Americans more than 10,000 years ago. The majority of the finds there dated to before Columbus' first excursion to the New World.

Bulldogs Rock Rival Milan In 23-14 Win

Travel to Dexter Friday Evening For Rematch With Traditional Rivals

A perfect pass from Randy Guenther to Paul Wood in the third quarter for a 65-yard touchdown gave Chelsea's Bulldogs the winning edge over Milan last Friday night, 23-14.

Break-in at Tower Shell Found Monday

A thief who was either not very thorough or in a big hurry stole \$290 Monday morning from a safe at Tower Shell Station, 1630 M-52, but left another \$386 that was within easy reach, Chelsea Police say.

Capt. Mynning Lands Crippled Plane Safely

Flying the friendly skies of United Airlines proved a bit less congenial than usual Monday for 42 passengers aboard Flight 918, but everyday heroics by a local pilot brought them to safety.

Marathon Cagers Aid Scholarship Fund

The idea for a scholarship committee might have been in the backs of the minds of Chelsea Teacher's Club members back in the late 1950's, when they annually awarded a single scholarship to a future teacher.

QUOTE
"A good end cannot sanctify means, nor must we ever do evil that good may come of it."
—William Penn.

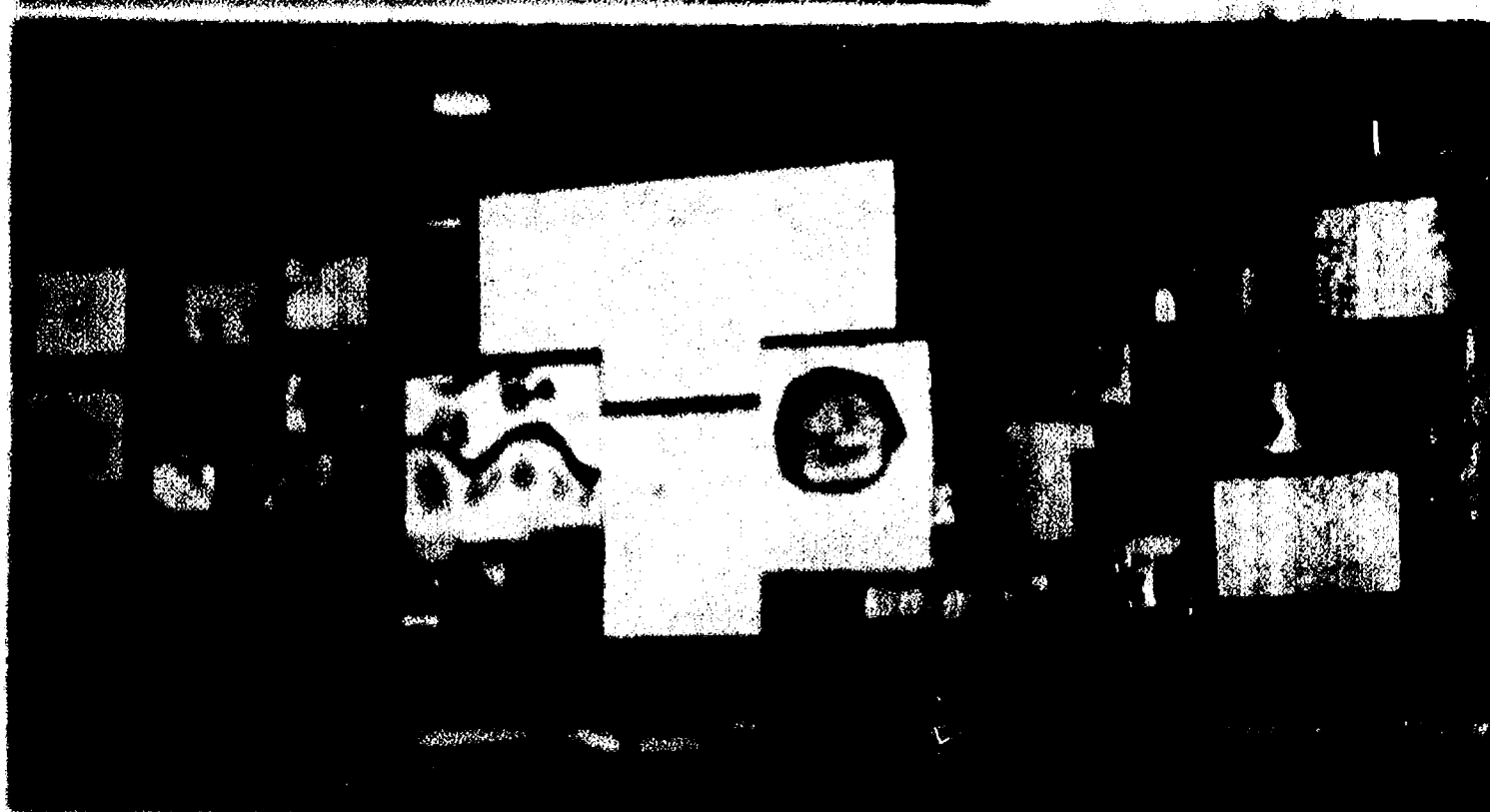


EXHIBIT OF HOLLOWEEN ART designed by Chelsea youngsters for the Halloween Town's Halloween Parade. The exhibit is on display at the north window-wall of Market Brothers Furniture at 1000 Park St. Black cats, pumpkins, and haunted houses were in abundance among the students' efforts, which were judged by Chelsea High school art instructors for originality and design. Two \$5 prizes were awarded to entries from each grade, first through eighth.

Halloween Drawing Contest Winners Named By Rec Council

Monday the winners of the Council's Halloween Drawing Contest were announced. Entries were judged by high school art instructors Mrs. Terry Ramsey and Mrs. Louise LaFollette. The original drawings and designs are now on display in all three windows of Market Brothers Furniture at the corner of Main and Park Sts.

Each a boy and girl winner in each grade received \$5 prizes for their efforts. By grade, the winners are: First, Rocky Finch and Jeff Messman; second, Debbie Morris and David Lane; third, Robert Dahl and Bill Merkel; fourth, Beth Heffer and Leon Wajewski; fifth, Radine Chervy and Chris Johnson.

Soil Conservation Service Compiles Map of Michigan Prime Land Use

By Clark A. Eacker
District Conservationist
U. S. Soil Conservation Service

The Soil Conservation Service, with the aid of many individuals, organizations and units of government, has compiled a map showing the Prime Land Use Areas of Michigan. These areas are con-

sidered the very best for agriculture, forests, recreation and wildlife.

When the prime land use maps were being developed, local groups in each county outlined on a county map the areas they considered prime for each particular use. Their actions were based on knowledge gained from field experience, published reports and guidelines provided by the Soil Conservation Service. This information was then placed on a state map and made into one map showing the various prime land areas.

Michigan had a 99 percent increase in its population between 1940 and 1970. This caused use changes on thousands of acres of land. An increasing amount of land is being used for shopping centers, homes, industrial sites, highways, or is simply being held for investment. Land is being taken for these purposes without regard for its need for producing agricultural and forest products, or for its value for wildlife and recreation purposes.

Based on the information obtained on a state-wide basis, Michigan has the following amounts of land in each of the prime land use categories: Agriculture, 4,464,000 acres; Specialty Crops, 440,000 acres; Forest Land, 4,700,000 acres; and Recreation and Wildlife, 5,250,000 acres.

The Prime Land Use Map of Michigan, as well as the Prime Land Use Map for Washtenaw county, can be seen at the Soil Conservation Service Office located at 6101 Jackson Rd., Ann Arbor.

JV Gridders Blank Milan For 5th Win

Chelsea's Junior Bulldogs blanked a good Milan team last Thursday evening, 22-0, to bring their season record to 5-2.

Coach Jon Schaffner called the victory "one of the most inspiring games I've ever seen a junior varsity team play." Anthony Houli led the attack, as he ran for extra points in the first quarter and passed to Dave Pletcher twice, once for a TD and once for extra points.

In the first quarter, the Junior Bulldogs opened the scoring with a 12-yard run by Dave Watson to put the tally at 6-0. Houli then ran for two points to make it 6-0.

In the second quarter it was Houli again, this time passing to Dave Pletcher for paydirt to put it at 14-0.

Howard Salyer opened the action in the third quarter, when he went 70 yards on a reverse to score for the local team. Houli then tossed to Pletcher for extra points for the final tally of the contest, to make it 22-0. After this display, Coach Schaffner felt safe and substituted freely in the final period.

Defensively Chelsea was led by Tim Reed with 13 tackles; Mike Kozminski, 11; Dave Schable and Jim Marshall, nine; Jerry Milliken, eight; Dan Hagen, Bob Blank and Eric Prinzling, seven each; Dave Pletcher, six; Mark Burnett, five; and Don Sullivan and Howard Salyer, four each.

Dave Schable and Dave Stoll recovered fumbles and Eric Prinzling intercepted a pass.

Tonight the Junior Bulldogs will meet Dexter at home at 7 p.m.

Dr. Hawks Certified In American Academy Of Ophthalmology

William N. Hawks, Jr., M. D., eye specialist for Chelsea Community Hospital and Chelsea Medical Clinic, has been professionally certified as a diplomate in the American Academy of Ophthalmology and Otorhinolaryngology. Dr. Hawks is also a Clinical instructor in ophthalmology at the University of Michigan Medical Center.

CUB SCOUT NEWS

DEN 1, PACK 415—

Our Halloween meeting was at the home of our den mother, "Aunt" Alice Atkinson, on Oct. 25. The meeting opened with a ghost story. We played Halloween games with a mask for first prize, and ended the meeting with scary groans and moans and juicy apples.

Our pack meeting was Oct. 23. Assorted wondrous costumes were unmasked as various Cubs and brothers and sisters. The caveman, policeman, gargoyle, money, and society girl were awarded huge pumpkins for being best, but the judges had a hard time deciding.

Cider and donuts followed game of "Try to Bite the Swinging Apples" and "Pin a Smile on the Pumpkin." Mr. and Mrs. Schneider furnished the very biggest pumpkin for that game.

John Greene, scribe.

PACK 455—
Pack 455 met at South school on Oct. 25. The theme of the pack meeting was Halloween. Den 1 had the best parent attendance. Rick Eder received the Bobcat pin.

Results of the pumpkin carving contest are: best carved—winner, Kipp Bertke; runner-up, Russ Harris; funniest—winner, Steve Hughes; runner-up, David Baldwin; spookiest—winner, David Harbaugh; runner-up, Phil Hofman.

Oct. 27 the pack has a five mile hike scheduled along the Potawatomi Trail from Silver Lake to Bruin Lake campground with lunch by the campfire at Bruin Lake.

Pack 455 Committee meeting at 7:30 the first Monday of the month.

FEW MARRIAGES?

Jim just told me he figured out why there are so few marriages in July and August. With everyone away on vacation, the office collection would be too small.

COOST Carpet Cleaning

November brings Thanksgiving guests, who will notice your carpeting—especially if it's clean. We recommend Host, the new method of cleaning carpets without water. The carpet is dry and ready to walk on immediately. Use our Host Electric Up-Brush. It's easy. Clean 40 sq. yds. only \$9.95. Phone for information.

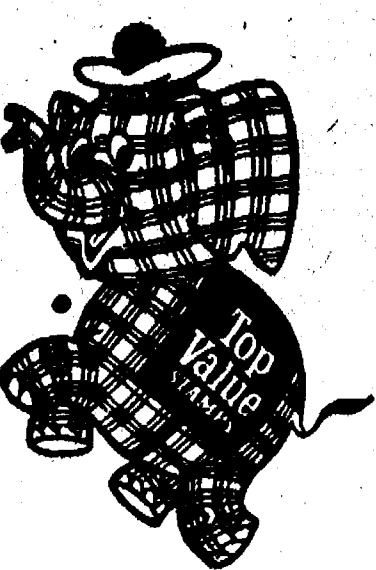
MERKEL BROTHERS

Jiffy market

Big Enough To
BEER - WINE - LIQUOR
LOTTERY TICKETS
MARATHON GAS PUMPS
AUTHORIZED
FOOD STAMP STORE

Serve You . . . Small Enough To Know You!
FULL LINE
SUPERMARKET

Open 7 a.m. to 10 p.m.
Corner Sibley & Workner Rds.
Phone 475-1701
Sale Prices Effective
Thurs., Nov. 1 thru Sun., Nov. 4



U. S. CHOICE BEEF
ROUND STEAK
Full Cut \$1³⁹ lb.
Top Round \$1⁴⁹ lb.

YOUNG - LEAN - TENDER
PORK CHOPS
Quarter Loins, 9-11 Chops
\$1⁰⁹ lb.

USDA CHOICE BEEF LEAN, BONELESS
RUMP ROAST lb. \$1⁴⁹
USDA CHOICE BEEF
SIRLOIN TIP STEAK lb. \$1⁷⁹

End Cut PORK CHOPS lb. 99¢
Center Rib Cut CHOPS lb. \$1²⁹
Center Loin Cut Chops lb. \$1³⁹

CORTLAND VALLEY
SAUERKRAUT
2-Lb. Bag 39¢

FARMER PEET'S
FRESH LINKS
PORK SAUSAGE
\$1²⁹ lb.

FARMER PEET'S
PURE SHORTENING
2-Lb. Pkg. 83¢

FARMER PEET'S
RING BOLOGNA
\$1²⁹ lb.

MEADOWDALE
HICKORY SMOKED
SLICED BACON
1-Lb. Pkg. \$1¹³

MEADOWDALE
SALAD DRESSING 1-Qt. Jar 39¢
COUNTRY FAIR

WHITE BREAD . 4 1-Lb., 4-Oz. Loaves 99¢

RISDON'S HOMOGENIZED
LO-FAT MILK Gallon 98¢

MAMA'S LARGE ASSORTMENT
COOKIES 3 8-Oz. Pkgs. \$1.00
Reg. Price 39¢ Pkg.

U. S. GRADE A WHITE
FRESH EGGS Med. Size Doz. 69¢
MICHIGAN U. S. No. 1

POTATOES . 50 Lb. Bag \$3.75
1 PINT THROW-AWAYS

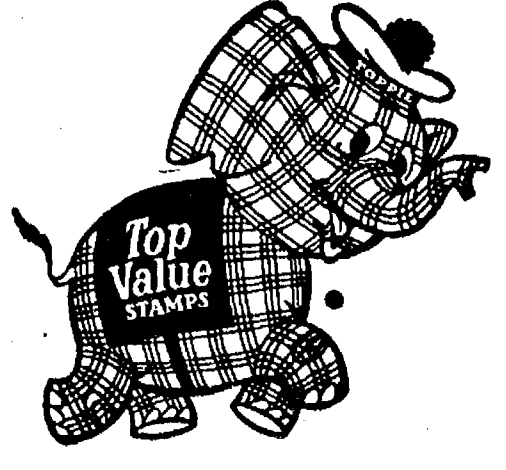
COCA-COLA Equals One Gallon 8 pac 98¢
CRISPY FLAKE OR HOME TOWN

POTATO CHIPS 12-Oz. Pkg. 49¢
ALL BRANDS & SIZES — CHECK OUR PRICES ANYWHERE!!

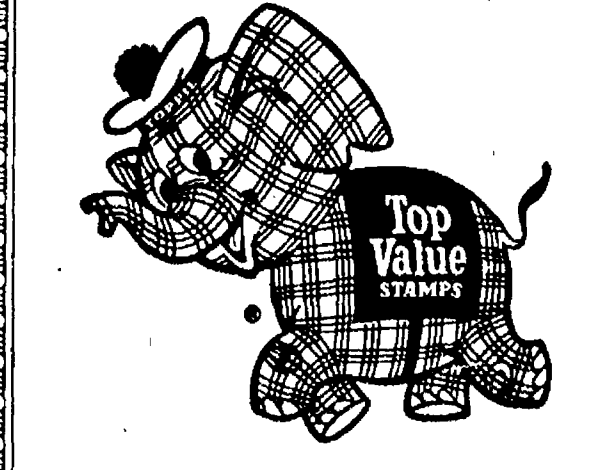
CIGARETTES Your Choice Per Carton \$3.39

GOLDEN YELLOW RIPE
BANANAS Lb. 16¢

"By Giving TOP VALUE STAMPS We Share"



FREE!!
100 TOP VALUE STAMPS
WITH THIS COUPON
GOOD ONLY NOV. 1 - NOV. 4 AT THE
JIFFY MARKET
CHELSEA, MICH.



Finest Top Quality Gas at Low Prices!
MARATHON GAS PUMPS
Cold Weather Gas You Can Depend On
PLUS FREE TOP VALUE STAMPS

MARATHON
REGULAR GAS 41.9 gal. Includes All Taxes
MARATHON
PREMIUM GAS 44.9 gal. Includes All Taxes

PRESTONE
NEW FORMULA
ANTI-FOAM & SUMMER COOLANT
\$1⁹⁸ gal.

7% PER ANNUM passbook certificate accounts

Ann Arbor Federal Savings & Trusts Certificate Account represents a solid base for any investment program. Available in amounts of \$1000 or more for 48 months. (Also available in 6% per annum Passbook Certificate Accounts in amounts of \$1000 for 30 months, 6% Passbook Certificate Accounts in amounts of \$1000 for 12 months and regular 5% DAILY INTEREST Passbook Savings accounts, no minimum—withdrawals anytime.) The sound, safe investments . . . insured to \$20,000 with FSLIC.

ANN ARBOR FEDERAL SAVINGS

Main St. near O'4 US-12

() Send full details

() Send % Passbook Certificate for \$ enclosed.

Name _____

Address _____

City _____ Zip _____

Almost Profit-Less! SAVE \$\$\$ ON 1973 LEFTOVERS

We sell a lot of cars—that's why we can afford to profit less on every car we sell. And as we profit less, we give you more: more car than you expect, and more generous terms, too. Come in and shave the Little Profit down to your price . . . it's the bare minimum for us, and the savings maximum for you!

1973 LTD 2-dr. Hardtop

Power Steering, Air Conditioning, Power Brakes, and All the Extras.

SAVE OVER \$1,000

Now Only \$3795

1973 Torino 2-dr. Hardtop

V-8, Auto. Trans., Power Steering and many other extras.

SAVE OVER \$600

Now Only \$2925

Over 23 in Stock To Choose From



The Little Profit saves you more than anything you ever bargained for

PALMER
SINCE APRIL 1912

FORD
475-1301

+ Services in Our Churches +

ngs weekly in half-time football
University as a member of the
A junior, she plays clarinet and
Elkins of Chelsea.

Represented ing Band

Crystal Impola, daughter of
Mrs. Frances Elkins, 515 Howard
and a Junior at EMU, will be
marching and playing her clarinet

the group. Crystal and her co-musicians have spent innumerable hours both in practice of their respective instruments and in intricate routines they must coordinate with their music.

Max Plank, 1237 N. Freer Rd., also has an integral part in the Band's weekly performances at football games, as he is presently in his sixth year as associate director of bands. He is an assistant professor of saxophone in EMU's music department.

With their final grid performance this week-end, band members who are both students studying music and those majoring in other areas within the University will spend the remainder of the year performing with either the symphonic or concert bands.

Problems Seen in Growing RV Industry

The \$2 billion-a-year recreational vehicle industry—whose products range from simple pick-up truck campers to ornately furnished motor homes—is likely to experience continued growth this year but it faces some notable problems farther down the road.

Prices of recreational vehicles could be lower than they are now, says Dr. David I. Verway, assistant professor in the research division of Michigan State University's Graduate School of Business Administration.

Doubling the Recipe

Have you ever made a half or double batch of a favorite recipe that somehow wasn't quite like your single recipe product?

There could have been a number of things you did wrong—like adding too much of this ingredient and too little of another. Anyway, the product did end up in the garbage.

"There is an easy way to prevent these failures," says Marilyn Mook, foods and nutrition specialist at Michigan State University. "And this is to write the doubled or halved recipe on a separate piece of paper rather than trusting yourself to remember to alter all the measurements correctly."

ly."

TICE

say we are now
r hours on both
e.

s are now:
m. 6 days a week
p.m. Sundays

SILKWORTH PANTRY

Phone 475-7051

After the film, there will be an informal fellowship with refreshments and the making of tape recordings, with Christmas music and greetings from the church to missionaries it supports.

A special offering will be taken and divided among these missionaries to help make the Christmas season brighter.

SUNDAY'S SERMON

Life . . .


Most of us are concerned with

WORKING OLD!
That woman's face is so wrinkled she doesn't dare wear long earrings. They make her look like Venetian blinds.

**Faster gains
from better**

FEEDS

...ives kept growing and gaining faster, on our balanced, fortified Calf Feed . . . enriched with better vitamins, minerals.

A black and white illustration of a cow standing in a field. In the background, there is a barn with a cupola on top. The cow is facing slightly to the left but looking towards the viewer. The style is simple and graphic, typical of mid-20th-century agricultural advertisements.

active minister in the United Methodist Church, will present his controversial sermon and then lead a question and answer session later in the afternoon.

In his 42 years as an active minister, the Rev. Large served 10 parishes involving the university world in Kalamazoo and Ann Arbor, and in ones involving the changing city in Philadelphia, Lansing, and Detroit. As a member of the Board of Missions, he worked especially with the committee on involvement of youth.

In 1971, however, he took an early retirement to concentrate, with his wife, Frances, on the establishment of the Amnesty International and Action Center in

ly."

NOTICE

We are glad to say we are now back to regular hours on both pumps and store.

Our hours are now:

6 a.m. to 11 p.m. 6 days a week
7 a.m. to 11 p.m. Sundays

GALLUP-SILKWORTH PUMP & PANTRY

295 S. Main St. Phone 475-7051

Forecast Period: October 28 to November 4, 1973

ARIES Mar. 21 - Apr. 19	A provocative and stimulating distraction represented in your chart. In other words temptation, in one form or another, rides high on this week's cosmic cycle.
TAURUS Apr. 20 - May 20	This week, yours could be a bad case of putting too much value on one thing while ignoring another. Keep affairs of the heart and finances in balance.
GEMINI May 21 - June 20	Push the throttle; full speed ahead! You've held back on a long range plan. Unless, you initiate your idea now . . . it's advisable to abandon a goal that is vanishing, quickly.
MOONCHILD June 21 - July 22	You're not a student of the theory: That it's good idea to step out of character, frequently. Nonetheless, your outlook towards life will change, temporarily.
LEO July 23 - Aug. 22	Prevailing influences give your "super ego" shot in the arm. Showmanship fever spreads through your chart as an epidemic. You strive for the mainstream of activity.
VIRGO Aug. 23 - Sept. 22	Based on your past financial obligations, this week could bring about a confrontation over monies. Incidentally, problems with the opposite sex are, likely.
LIBRA Sept. 23 - Oct. 22	Don't attempt coercive tactics, particularly with routine associates who don't see things your way. Hold your temper, otherwise you face a string of quarrels.
SCORPIO Oct. 23 - Nov. 21	Put a check rein on the urge to manipulate people. Bluntly, you are responsible for a bad situation developing among your associates. Think about it!
SAGITTARIUS Nov. 22 - Dec. 21	It would be a good idea to exert a little tact and diplomacy, in affairs of the heart. Apparently, you've been too blunt with a member of the opposite sex.
CAPRICORN Dec. 22 - Jan. 19	In one form or another, you will be approached to either join forces or form a partnership, sorts, Joint ventures are favorable.
AQUARIUS Jan. 20 - Feb. 18	Outside pressures might force you into impulsive actions. Let's put it this way: Don't make major decisions, unless they are thought out.
PISCES Feb. 19 - Mar. 20	Apparently, a member of the opposite sex will be impressed by your conduct. For those unduly

CONSOLIDATED REPORT OF CONDITION OF

Chelsea State Bank

of Chelsea, Michigan 48118, at the close of business October 17, 1917, the bank being a State banking institution organized and operating under the laws of this State and a member of the Federal Reserve System. The report is prepared in accordance with a call made by the State Banking Authority and by the Federal Reserve Bank of this District.

ASSETS	
Cash and due from banks (including no unposted debits) \$	1,809.00
U. S. Treasury securities	5,312.22
Accounts receivable from obligations of other U. S. Government agencies and corporations	100.00
Accounts receivable from obligations of States and political subdivisions	3,636.66
Accounts receivable from other securities (including \$36,000 corporate stocks)	54.30
Investments in Federal funds sold and securities purchased under agreements to resell	2,200.00
Loans on hand and other loans	13,514.14
Real estate, bank premises, furniture and fixtures, and other assets	
Representing bank premises	308.66
TOTAL ASSETS	\$26,834.22
LIABILITIES	
Deposits of individuals, partnerships, and corporations	\$ 5,165.99
Time and savings deposits of individuals, partnerships, and corporations	16,787.88
Deposits of United States Government	143.66
Deposits of States and political subdivisions	1,459.13
Unsettled and officers' checks, etc.	191.30
TOTAL LIABILITIES	\$23,747,769.27
(a) Total demand deposits	6,175,947.08
(b) Total time and savings deposits	17,571,822.19
Other liabilities	482.90


RESERVES ON LOANS AND SECURITIES	
reserve for bad debt losses on loans (set up pursuant to IRS rulings)	\$ 206,70
TOTAL RESERVES ON LOANS AND SECURITIES	\$ 206,70
CAPITAL ACCOUNTS	
equity capital, total	2,396,70
common stock—total par value	400,00
(No. shares authorized	8,000)
(No. shares outstanding	8,000)
surplus	800,00
undivided profits	1,096,70
reserve for contingencies and other capital reserves	100,00
TOTAL CAPITAL ACCOUNTS	\$ 2,396,70
TOTAL LIABILITIES, RESERVES, AND CAPITAL ACCOUNTS	\$26,834,23
MEMORANDA	
average of total deposits for the 15 calendar days ending with call date	\$24,063,37
average of total loans for the 15 calendar days ending with call date	13,615,01
deposits of the State of Michigan	18,45
I, Paul G. Schaible, Jr., Vice President and Cashier, of the aforesaid bank do hereby declare that this report of condition is true and correct to the best of my knowledge and belief.	
PAUL G. SCHAIBLE, JR.	
attest the correctness of this report of condition and declare that it has been examined by us and found to be true and correct.	
PAUL E. MANN	
HOWARD S. HOLMES	
JOHN F. KEUSCH	
Directors	
State of Michigan, County of Washtenaw, ss:	
Sworn to and subscribed before me this 24th day of October, 1975, at Detroit, Michigan.	
Peter C. Flintoft, Notary Public	
My commission expires April 21, 1975.	

WORKING OLD!
That woman's face is so wrinkled she doesn't dare wear long earrings. They make her look like Venetian blinds.

**Faster gains
from better**

FEEDS

...ives kept growing and gaining faster, on our balanced, fortified Calf Feed . . . enriched with better vitamins, minerals.

A black and white illustration of a cow standing in a field. In the background, there is a barn with a cupola on top. The cow is facing slightly to the left but looking towards the viewer. The style is simple and graphic, typical of mid-20th-century agricultural advertisements.

SOUTH ELEMENTARY SCHOOL NOTES

THIRD GRADE—

Teacher: Mrs. Decker
 The third graders have been studying the story of the boy who was afraid of the dark. They have been reading the story and acting it out. They have also been making puppets to go with the story.

The third graders have been studying the story of the boy who was afraid of the dark. They have been reading the story and acting it out. They have also been making puppets to go with the story.

The third graders have been studying the story of the boy who was afraid of the dark. They have been reading the story and acting it out. They have also been making puppets to go with the story.

The third graders have been studying the story of the boy who was afraid of the dark. They have been reading the story and acting it out. They have also been making puppets to go with the story.

The third graders have been studying the story of the boy who was afraid of the dark. They have been reading the story and acting it out. They have also been making puppets to go with the story.

The third graders have been studying the story of the boy who was afraid of the dark. They have been reading the story and acting it out. They have also been making puppets to go with the story.

The third graders have been studying the story of the boy who was afraid of the dark. They have been reading the story and acting it out. They have also been making puppets to go with the story.

The third graders have been studying the story of the boy who was afraid of the dark. They have been reading the story and acting it out. They have also been making puppets to go with the story.

The third graders have been studying the story of the boy who was afraid of the dark. They have been reading the story and acting it out. They have also been making puppets to go with the story.

The third graders have been studying the story of the boy who was afraid of the dark. They have been reading the story and acting it out. They have also been making puppets to go with the story.

The third graders have been studying the story of the boy who was afraid of the dark. They have been reading the story and acting it out. They have also been making puppets to go with the story.

The third graders have been studying the story of the boy who was afraid of the dark. They have been reading the story and acting it out. They have also been making puppets to go with the story.

The third graders have been studying the story of the boy who was afraid of the dark. They have been reading the story and acting it out. They have also been making puppets to go with the story.

The third graders have been studying the story of the boy who was afraid of the dark. They have been reading the story and acting it out. They have also been making puppets to go with the story.

The third graders have been studying the story of the boy who was afraid of the dark. They have been reading the story and acting it out. They have also been making puppets to go with the story.

The third graders have been studying the story of the boy who was afraid of the dark. They have been reading the story and acting it out. They have also been making puppets to go with the story.

The third graders have been studying the story of the boy who was afraid of the dark. They have been reading the story and acting it out. They have also been making puppets to go with the story.

The third graders have been studying the story of the boy who was afraid of the dark. They have been reading the story and acting it out. They have also been making puppets to go with the story.

The third graders have been studying the story of the boy who was afraid of the dark. They have been reading the story and acting it out. They have also been making puppets to go with the story.

The third graders have been studying the story of the boy who was afraid of the dark. They have been reading the story and acting it out. They have also been making puppets to go with the story.

The third graders have been studying the story of the boy who was afraid of the dark. They have been reading the story and acting it out. They have also been making puppets to go with the story.

The third graders have been studying the story of the boy who was afraid of the dark. They have been reading the story and acting it out. They have also been making puppets to go with the story.

The third graders have been studying the story of the boy who was afraid of the dark. They have been reading the story and acting it out. They have also been making puppets to go with the story.

The third graders have been studying the story of the boy who was afraid of the dark. They have been reading the story and acting it out. They have also been making puppets to go with the story.

The third graders have been studying the story of the boy who was afraid of the dark. They have been reading the story and acting it out. They have also been making puppets to go with the story.

The third graders have been studying the story of the boy who was afraid of the dark. They have been reading the story and acting it out. They have also been making puppets to go with the story.

Bradbury Hits Discrimination Against Out-County Residents

The following is my statement as presented at the Board of Commissioners meeting on Wednesday, Oct. 31. I want the people of Washtenaw County to be aware that the minority of your county government are aware of these problems and continue to be active and alert in your behalf.

I am concerned and a little cantankerous over developments which are upon us here, and I am taking this opportunity to express this. It particularly concerns me because I represent the so-called "out county residents" who I believe are being discriminated against in many ways. This is illustrated by the following points.

In the past, the tax levy has been held at 5 1/2 mills. Included in this are fundings for the following three items:

1. Huron - Clinton Authority—The current committee plan to put this outside the 5 1/2 mills, which the taxpayers in my area are not in favor of to begin with, and certainly do not entertain good thoughts about a tax increase to support large parks.

2. The Building Authority—When the Board of Commissioners assumed this responsibility it was done very reluctantly and only because it could be assumed at no tax increase. Now you tell the people they'll have to pay for it above the 5 1/2 mills.

3. County Drains—The drains are mainly in Ypsilanti township, and my people are not enthusiastic about paying for them at all. In fact, they are truthful and agree that Ypsilanti township is alienating themselves with all other county units because of their individualistic demands and this is just one more incident to add to a long list.

Now for the suggested CIP program.

1. Medical Care Facility. Less than five years ago we did away with a county operated medical facility because facts presented assured us that our county medically indigent could be better cared for, and much less expensively to the county. Not one of my constituents have complained to me about this plan and I have no facts to show that a government operated facility is wise at this time—yet your committee is ready to fund such a facility.

Look given to this with much citizen input before such plans are formulated.

Maybe you think that as an experienced Republican Commissioner, I do not know how such plans get promoted. I do know. It is because the committee head is drawing up the plan, the influence of his committee is agreeing with the plan without understanding or perhaps without even an opportunity to review the plans and then you try to shove it down the throats of all commissioners and county residents—without divulging pros and cons.

It may well be we can go along with the idea of a new jail but we must know what is needed—cost, size and location. If it can be proven that we need additional office space and court rooms it might be well to consider a county-city building. A Ypsilanti Service Center may be needed but plans are so vague without size, cost and location, and the agreements with the City of Ypsilanti that I must give it much thought.

Why do you allow a committee head to do all the planning and goals for the children and the procedures she uses. The parents were told how they could help their children at home.

Parents were asked if they would be interested in having a speaker from the Washtenaw County Intermediate School District come and speak. Mrs. Robert DeVoe, Mrs. Mike Austin and Mrs. Jesse Coburn formed a committee to look into this matter.

Reporters: Pat Leonard, high school tutor. At two o'clock on Wednesday, Oct. 10, Mrs. Maitland held a parents get together. The parents and Mr. Wojcik, the principal, were present. Apple cider and cookies were served.

Mrs. Maitland explained, her

goals for the children and the procedures she uses. The parents were told how they could help their children at home.

Parents were asked if they would be interested in having a speaker from the Washtenaw County Intermediate School District come and speak. Mrs. Robert DeVoe, Mrs. Mike Austin and Mrs. Jesse Coburn formed a committee to look into this matter.

AGRICULTURE IN ACTION

By Michigan Farm Bureau Staff Writer

Toilet Training For Livestock

A milking machine which automatically disconnects itself when the job is done will be a great labor and time saving device for dairy farmers. One which automatically connects itself would be an even greater boon and such modern equipment is currently being perfected at Michigan State University. But farmers are now wondering—would they be better off if researchers had concentrated their efforts toward developing a method of toilet-training livestock?

The mental picture of diapered cows, horses, pigs, and poultry might bring giggles to

ment of personnel to administrative positions in county government should be applied. Since Jan. 1, 1973 several top level positions have been created, funded and filled and already over half of them have resigned. Their hiring and leaving is another example of the ruthless inexperienced handling done by the dominate regime. None of the young men were qualified by experience to handle the responsibilities of their job, nor could they cope with the same weaknesses found in the reigning party—similar comings and goings can be anticipated if changes do not occur. What the county needs, and more pointedly, what the Board of Commissioners need is more experienced people who are willing to work as a team for better government, despite what they call themselves politically.

Commissioner Jay L. Bradbury.

The same goal for the appoint-

ment of personnel to administrative positions in county government should be applied. Since Jan. 1, 1973 several top level positions have been created, funded and filled and already over half of them have resigned. Their hiring and leaving is another example of the ruthless inexperienced handling done by the dominate regime. None of the young men were qualified by experience to handle the responsibilities of their job, nor could they cope with the same weaknesses found in the reigning party—similar comings and goings can be anticipated if changes do not occur. What the county needs, and more pointedly, what the Board of Commissioners need is more experienced people who are willing to work as a team for better government, despite what they call themselves politically.

Commissioner Jay L. Bradbury.

some, but farmers aren't laughing. The Federal Water Pollution Act, enacted by Congress in October, 1972, calls for a goal of zero discharge of wastes into the waters of this nation by 1985. The Environmental Protection Agency (EPA) is responsible for implementing the Act and, according to officials, they mean to enforce the law.

The EPA recently published the proposed standards of performance which apply to all dairy, beef, swine, sheep and poultry feedlots that have discharges of pollutants into navigable waters. In Michigan, with its many lakes, streams, ditches and other surface water, farmers are especially concerned. Under the proposal, these feedlots have until July 1, 1977 to meet the no discharge standard. Farmers think it's rather ironic that the EPA standards are based largely upon recommendations of the Hamilton Standard Division of United Aircraft Corporation. They weren't aware that the aircraft industry had the knowledge or experience in the field of agriculture to come up with realistic recommendations; they could hardly see themselves in the role of advisors for designing space vehicles.

What concerns farmers most is the economic and production impact the proposed standards will have on the agricultural industry, especially the average-size family enterprise which has long been the backbone of our economic system.

EPA estimates costs of providing adequate water run-off protec-

tion will be between \$2 and \$12 per head of beef cattle, while other researchers say it will be closer to \$30 per head. Whatever the cost, farmers and consumers (who already think their steak is high enough) will pay dearly for the idealistic zero discharge goal.

Farmers are not against protecting the environment—but they are for producing food. They believe, given time, these two goals can be compatible without such unnecessary standards.

HOLY YEAR TO BE OBSERVED

A special 15-member committee has been established in the Catholic Diocese of Lansing to plan for the observance of a Holy Year of prayer and penance as proclaimed by Pope Paul VI. Activities are planned at the local church, area and diocesan level in 1974 by the committee headed by the Rev. Raymond Goehring, associate pastor of St. Joseph Parish, St. Johns.

RECRUIT GRADUATE: Navy Seaman Dennis D. Landwehr, son of Mr. and Mrs. Duane Landwehr of 18000 Cayonough Lake Rd., graduated from recruit training at the Naval Training Center in San Diego, Calif.

CHELSEA GLASS WORKS

WORKMANSHIP AND MATERIALS FULLY GUARANTEED. Open Daily 8 a.m. to 5 p.m.; Sat. 8 a.m. to 1 p.m. 140 W. Middle, Chelsea Phone (313) 475-8667

WE REPAIR AND REPLACE:

★ STORE FRONTS ★ FURNITURE TOPS ★ SHOWER DOORS ★ THERMOPANES ★ AUTO GLASS - Including Windshields Free Pick-up and delivery of out work.

Storm Door & Window Reglazing & Screens COMMERCIAL BUILDINGS OR RESIDENTIAL PROMPT SERVICE REASONABLE PRICES

Now. An official program that can cut heating costs up to 17% and conserve Natural Gas.

If you're like most people, holding down heating bills is an idea that hits you right where you live. And, chances are, you'd like to help save Natural Gas, too. Especially during this time of energy

shortages. Now there's an official program that supports both of these objectives. It was developed at the direction of the Michigan Public Service Commission, which is seeking ways to conserve Natural Gas and hold down utility bills by the wise use of energy.

The heart of the program is simply this: Installing ceiling insulation in your home. It's quick. Economical. Easy. A recent White House study found that "the most significant opportunity" for homeowners to conserve energy was through "improved insulation of houses."

"Such improved insulation," the government said, "would benefit the individual homeowner by reducing winter fuel bills, summer air conditioning bills, size and capital cost of heating and cooling equipment, and air pollution."

The Michigan Public Service Commission agrees with this conclusion. It has supported a study prepared by Michigan Consolidated Gas Company which found that Michigan homeowners can achieve fuel savings of as much as 17% by adding six inches of insulation to their attics. Naturally, results for your home may vary due to architectural differences and your heating habits.

To help you realize fuel savings in your home, we've designed an easy home insulation program. Here's how it works. First, you can install the ceiling insulation your-

self. It's a simple do-it-yourself project, and the most economical way to put in ceiling insulation and hold down your heating bills. Many customers can accomplish the task for less than

\$100. Michigan Consolidated Gas Company has even prepared a helpful booklet that shows you just how to do the job. Secondly, you can call a contractor of your choice and arrange to have the work done. Or call Michigan Consolidated Gas Company. We'll have one of our participating insulation subcontractors install it for you.

Our insulation program is easy on your budget, too. Many houses with up to 1,000 square feet in the ceiling area can be insulated for less than \$200. And, there's a payment plan to suit most every customer. You can pay cash. Or, you can pay just 20% down at the time the contract is signed—then simply have the remaining cost included in your gas bill. Pay it off on your next three gas bills with no interest or carrying charges. Finally, you can pay for the job over an extended period at an interest rate of 1% monthly on the unpaid balance. ANNUAL PERCENTAGE RATE OF 12%.

Whichever you choose, you'll be taking an important step toward holding down your heating bills. And cutting down on the use of Natural Gas. Why not plan on doing it now. Contact us today for additional details. And if you're a do-it-yourselfer, ask for our free booklet.

MICHIGAN CONSOLIDATED GAS COMPANY

We care about your tomorrow.

8083 MAIN ST. DEXTER 426-8466 DEXTER LOCKER DUNBAR MEATS 1431 E. MICHIGAN YPSILANTI 483-7466

MEATS THAT ARE GOOD

Fill Your Freezer While Prices Are Low!

SIDES 73¢*

HIND 89¢*

FRONT 69¢*

DEER PROCESSING



CUSTOM SLAUGHTERING & PROCESSING

*Subject to cutting loss and processing cost.



Members of the National Honor Society, which was organized last Saturday, are shown in the photo above. From left: Barbara Moore, Barbara Fletcher, Elaine DeWitt, Linda Warren, Sue Stenmark, and Judy Bove. Second row: Margaret

Marathon Basketball...

(Continued from page one)

So once again the Scholarship Committee must look to fund-raising to bring in the contributions last Saturday, in the National Honor Society's first planned activity to do just that in a marathon basketball game, Dave Klemer, NHS president, reports that \$133 was raised from the concession stand at the game, around one-third of which will be used to defray the cost of food provided. An approximate figure of \$70 was also "pledged" to the group by area businesses and industries in support of the game.

For sports fans, the National Honor Society eagerly defeated all other comers, 73-70.

High school counselor George Bergman noted the exhaustion of some of the marathon's players and said that maybe the group should try softball in the spring (a bit less constant exertion?). He called the turnout good, though he called the turnout good, though, and anticipates other fund-raising plans by NHS members. Klemer agrees that other activities will be discussed for raising money, although he isn't certain right now of what they might be. The turnout as players from NHS people, he said, was around 80 percent roughly—40 members.

The Scholarship Committee is in full swing, too, as it met last month and drafted a newsletter to be sent to potential contributors. "Will you help us?" the letter asks, and touches on the history of the fund as well as listing the past year's winners.

"By your contribution you are expressing your trust in and hope for the future of Chelsea and its graduates," the letter continues. Like a good question—one that deserves an answer.

Crippled Plane...

(Continued from page one)

The situation was termed "an incident," rather than an accident, Merton emphasized, although full emergency procedures were followed to assure the safety of passengers. The airline is investigating the cause of the damage to the aircraft.

An unidentified passenger of the aircraft telephoned The Standard long distance early Tuesday morning to make certain that Capt. Myning received his proper recognition for his role in the incident. "I checked with United and found out where his hometown is, and I wanted to make sure he knew we appreciated it, even if it was just in the line of duty. The airlines probably wouldn't publicize something like this, so I thought maybe you would."

Mynning was to be out of town until Wednesday and could not be reached for comment.

Registration...

(Continued from page one)

istration for the millage election (Nov. 16) and the day of the election itself (Dec. 17).

Four board of election inspectors, all qualified electors of the school district, were appointed by the board to oversee election procedures. They are Frances Manzel, Lorena Wenk, Mary Ann Coltre, Virginia Visel, Ethel Halst, Dorothy Koenigter, Cecile Bernath, and Irene Claire.

Recreation Classes...

(Continued from page one)

aid, yoga, photography, junior theatre, guitar, judo, and Biddy (ages 8-12) basketball.

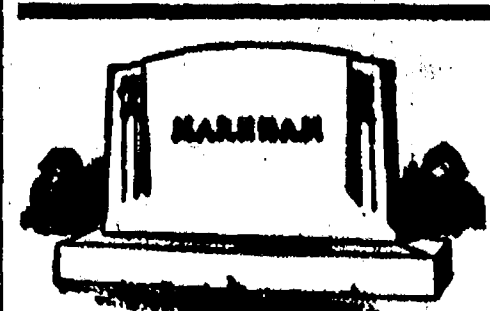
Those interested in instruction should contact Balistrere at 475-8511.

will aid in formulating a plan, zoning ordinance, and objectives that a majority of the people in the township will support most of the way," Mrs. Denham said.

Allen Dines, vocal opponent of the Huron-Clinton Metropolitan Authority's plans for a Mill Creek metro-park, remarked that the creation of an historical district within the township is "quite feasible, and not an insurmountable problem."

The state legislature allows townships by a rather uncomplicated process to establish these districts and provides protection for them.

At least one member of the audience appeared encouraged by the township's recent gatherings of support against the proposed Mill Creek park, declaring, "You see 'We won't sell to HCMA' signs all over this community. We've learned that we can stand up to things, and we intend to stand up on this."



MAUSOLEUMS ★ MONUMENTS
BRONZE TABLETS ★ MARKERS

BECKER MEMORIALS
6033 Jackson Road
ANN ARBOR, MICHIGAN

★ District Court Proceedings ★

Week of Oct. 22-26

Geno Siffani pled guilty to speeding and was assessed fines and court costs of \$23.

Dean A. Vonneste pled guilty to speeding and was assessed fines and court costs of \$29.

Robert Williams pled guilty to driving too fast for road conditions and was assessed fines and court costs of \$21.

Theron Palmeter pled guilty to passing in a no-passing zone and was assessed fines and court costs of \$21.

Mark Mutchie pled guilty to speeding and was assessed fines and court costs of \$25.

Erma Moore pled guilty to a charge of drunk and disorderly and was assessed fines and court costs of \$50.

Bonnie Wengren pled guilty to a charge of drunk and disorderly and was assessed fines and court costs of \$50.

Richard Ciminelli pled guilty to a charge of drunk and disorderly and was assessed fines and court costs of \$50.

Richard Snyder pled guilty to driving without an operator's license on his person. The case was set over for consideration on Nov. 17, to await proof.

Christopher Merryman pled guilty to reckless driving and was assessed fines and court costs of \$75.

Richard Turner pled guilty to having open intoxicants in a motor vehicle. He also pled guilty to a charge of driving while under the influence of liquor. Sentencing is set for Dec. 10.

Gregory Atkins pled guilty to careless driving and will be sentenced Dec. 3.

Danny Salyer pled guilty to failure to stop for a police signal and was assessed fines and court costs of \$50.

Ernest G. Norton was found guilty of leaving the scene of a property damage accident and was assessed fines and court costs of \$100 and sentenced to one year probation.

Armando Trevino was found guilty of reckless driving and was assessed fines and court costs of \$100 and sentenced to six months probation.

Michael Robison pled guilty to possession of improper registration and was assessed fines and court costs of \$16. He pled guilty to violation of the basic speed law and was assessed fines and court costs of \$21.

James Pennix pled guilty to speeding and was assessed fines and court costs of \$33.

Raymond Degeorgio pled guilty to speeding and was assessed fines and court costs of \$31.

Charles Staudenmaier pled guilty to a charge of drunk and disorderly and was assessed fines and court costs of \$50.

Jeff Plaque pled guilty to driving a motorcycle on other than a designated roadway and was assessed fines and court costs of \$16.

Laurence Yee pled guilty to possession of an altered small game license and will be sentenced Dec. 3.

Paul Chamberlain pled guilty to impaired driving and was assessed fines and court costs of \$250. He must also participate in the alcohol education series.

James Powers pled guilty to a charge of driving while under the influence of liquor and was assessed \$350 in fines and court costs. He must also participate in the alcohol education program.

Frances Laban did not appear and a bench warrant was issued for her.

Robert Guizdala did not appear and a bench warrant was issued for him.

John M. Silcox pled guilty to speeding and was assessed fines and court costs of \$36. He pled guilty to driving a motorcycle without motorcycle endorsement and the case was dismissed on \$8 costs.

Donald Spon pled guilty to driving under the influence of liquor and was assessed \$250 in fines and court costs. He must also participate in the alcohol education program.

Thomas Winans pled guilty to possession of marijuana and was assessed fines and court costs of \$100.

Daniel Rohen pled guilty to careless driving and was assessed fines and court costs of \$50.

Richard R. Terry did not appear. His bond was forfeited and a bench warrant issued for him.

Week of Oct. 16-23

Josephine Weldon pled guilty to passing a school bus which was flashing its lights and was assessed fines and court costs of \$75.

Helmich Boesenhoof pled guilty to speeding and was assessed fines and court costs of \$31.

Daniel Bichnell pled guilty to driving while under the influence of liquor and was assessed fines and court costs of \$250 and sentenced to two years probation. His fine will be prorated, and he was also sentenced to five days work on the work program.

Lynn Thornton pled guilty to speeding and was assessed fines and court costs of \$55.

Charles Huntley pled guilty to disturbing the peace and will be sentenced Nov. 16.

license on his person. The case put over to Oct. 29 to await proof.

Linda Hathaway pled guilty to speeding and was assessed fines and court costs of \$21.

Billy K. Little pled nolo contendere to use of marijuana. He will be sentenced Dec. 5.

Daniel McKinley pled guilty to failure to yield the right of way and was assessed fines and court costs of \$21.

Ricky Risner pled guilty to assault and battery and was assessed fines and court costs of \$50.

Gene Ryan pled guilty to driving without an operator's permit on his person and was assessed fines and court costs of \$24.

James Aseltine pled guilty to driving without a valid operator's permit on his person and was assessed fines and court costs of \$25.

CYN'S CERAMICS

TOOLS - PAINTS - GREEN WARE - BRUSHES
FINISHED PIECES & OTHER SUPPLIES

Class Tues. and Thurs., 7:30-10:30 p.m.
Tuesday afternoon class 12:30-3:30 p.m.

Come and browse or call for information

1408 SUGAR LOAF LAKE - CHELSEA - PH. 475-2476

7% PER ANNUM
passbook
certificate
accounts

Ann Arbor Federal Savings 7% Passbook Certificate Account represents a solid base for any investment program. Available in amounts of \$1000 or more for 48 months. (Also available are 6% per annum Passbook Certificate Accounts in amounts of \$1000 for 30 months, 6% Passbook Certificate Accounts in amounts of \$1000 for 12 months and regular 5% DAILY INTEREST Passbook Savings accounts, no minimum-withdrawals anytime.) The sound, safe investments... insured to \$20,000 with FSLIC.

ANN ARBOR FEDERAL SAVINGS

near Old US-12

() Send full details

() Send _____ Passbook Certificate for \$ _____ enclosed.

Name _____

Address _____

City _____

Zip _____

DON'T FORFEIT YOUR RIGHT TO PART OF THE ACTION



IF YOU'RE 18 OR OVER AND LIVE IN THE CHELSEA SCHOOL DISTRICT

→ **REGISTER NOW**

TO BE ELIGIBLE TO VOTE IN THE
School Building-Bond Election

ON DECEMBER 17th!

SEE YOUR TOWNSHIP CLERK & REGISTER NOW - OR:

FOR YOUR CONVENIENCE

The Clerks of all Townships in the Chelsea School District (that's Dexter, Freedom, Lima, Lyndon, Sylvan and Waterloo) will be at SYLVAN TOWNSHIP HALL Saturday, November 3rd from 10 a.m. to 1 p.m.

REMEMBER: THE REGISTRATION DEADLINE FOR THIS VITAL ELECTION IS NOVEMBER 16th

NOTICE

To My Present & Future Customers

Due to a company policy I have discontinued all advertising. Please clip this out and save for future sales and service.

JAMES COX

ELECTROLUX SALES & SERVICE

118 Riverside Drive - Manchester, Mich. 48158

PHONE 428-2931 or 428-8686

November Specials!

L & R RESTAURANT

PHONE 426-8668

11485 NORTH TERRITORIAL ROAD

THURSDAY - 5 to 9 p.m.

SPAGHETTI DINNER

All You Can Eat - \$1.85 per person

FRIDAY - 5 to 9 p.m.

OCEAN PERCH DINNER

All the perch you can eat

\$2.10 per person

In addition to our regular menu we are now serving our own

HOME-MADE PIZZAS After 5 p.m.

NEW HOURS: Sun., Tues., Wed., 11-9;

Thurs., Fri., Sat., 11-11. Closed Mondays



Mr. and Mrs. Cortland Leigh Hunt

Chelsea Couple's Granddaughter Wed in Tecumseh Ceremony

Brandon Lee Johnson became the bride of Cortland Leigh Hunt Friday, Oct. 27, at 2 p.m. in St. Mary Church by the Rev. Fr. Philip Dupuis.

Vocalist for the ceremony, which was attended by 140 guests, was Ellen Lamerson of Ypsilanti, who sang "Color My World," "The Wedding Song," and "The First Time Ever I Saw Your Face." She was accompanied by Heidi Sprague, keyboardist of Belleville, playing flute.

For the ceremony, the bride wore a floor-length, empire-waisted, A-line dress of ivory dulcette satin, with chapel train and trimmed with cluny lace, which was pulled through ribbon on the bodice to form deep V's. Her camelot headpiece flowed to a cathedral veil trimmed with tiers of cluny lace. She carried a basket of off-white straw flowers, trimmed with cascades of ivory ribbons.

Matron of honor, Mrs. Gene Skidgel, sister of the bride, appeared in a floor-length, empire-waisted, olive green velvet dress, which featured a bodice trimmed with ivory lace and olive green pull-through ribbon. The outfit was topped by a halo crown of autumn-colored straw flowers and baby's breath, and she carried a basket of similarly autumn-colored straw flowers.

The two bridesmaids, Diane Halstead, a sister of the bridegroom, and Jane Osterle, of Chelsea, wore gowns identical to that of the matron of honor, but in gold velvet.

The costume of the bride's mother was a floor-length, empire-waisted gown of brown, rose, and gold floral, with olive green chiffon inset. The bridegroom's mother appeared in a three-piece aqua and white ensemble.

Also attending the bride were Laura Skidgel, her niece, as a junior bridesmaid, and Tom Skidgel, her nephew, as the ring bearer.

The bridegroom chose Michael Halstead, his brother, to be his best man.

The reception at the Rod and Gun Club was attended by approximately 100 persons. Mrs. Raymond Mierzwa and Mrs. Michael Embury assisted with the cutting of the cake, and Linda L. Cole assisted with the guest book.

The couple is presently residing at 511 1/2 Second St., in Jackson. They plan a belated wedding trip to the Bahamas at Christmas.

The bride, the daughter of Mr. and Mrs. Robert B. Devine of 844 Lombardy Dr., North Lake, is presently a senior at Eastern Michigan University. The bridegroom is the son of Mr. and Mrs. Darwin M. Halstead of 5015 Donnelly Rd., Jackson, is a graduate of Jackson Community College and is employed by Steinkamp-Fenton Sheet Metal Co. of Jackson.

The bride-to-be, her mother, and the prospective bridegroom's mother were presented with corsages from the hostess. Decorations of red, white, and green, which will be the wedding colors, were carried out in the floral centerpiece and decorated cake. The bride received numerous gifts.

I think television is becoming duller and duller. My kids are doing their homework again!

Magic Mirror Beauty Salon

Open Tuesday thru Friday
9 a.m. to 9 p.m.
Saturday, 8 a.m. to 3 p.m.

PHONE 665-0816

Claudia Devine, Daniel Halstead Boots Available For Nearly All Occasions

Claudia Lee Devine and Daniel Lee Halstead were married Saturday, Oct. 27, at 2 p.m. in St. Mary Church by the Rev. Fr. Philip Dupuis.

Vocalist for the ceremony, which was attended by 140 guests, was Ellen Lamerson of Ypsilanti, who sang "Color My World," "The Wedding Song," and "The First Time Ever I Saw Your Face." She was accompanied by Heidi Sprague, keyboardist of Belleville, playing flute.

For the ceremony, the bride wore a floor-length, empire-waisted, A-line dress of ivory dulcette satin, with chapel train and trimmed with cluny lace, which was pulled through ribbon on the bodice to form deep V's. Her camelot headpiece flowed to a cathedral veil trimmed with tiers of cluny lace. She carried a basket of off-white straw flowers, trimmed with cascades of ivory ribbons.

Matron of honor, Mrs. Gene Skidgel, sister of the bride, appeared in a floor-length, empire-waisted, olive green velvet dress, which featured a bodice trimmed with ivory lace and olive green pull-through ribbon. The outfit was topped by a halo crown of autumn-colored straw flowers and baby's breath, and she carried a basket of similarly autumn-colored straw flowers.

The two bridesmaids, Diane Halstead, a sister of the bridegroom, and Jane Osterle, of Chelsea, wore gowns identical to that of the matron of honor, but in gold velvet.

The costume of the bride's mother was a floor-length, empire-waisted gown of brown, rose, and gold floral, with olive green chiffon inset. The bridegroom's mother appeared in a three-piece aqua and white ensemble.

Also attending the bride were Laura Skidgel, her niece, as a junior bridesmaid, and Tom Skidgel, her nephew, as the ring bearer.

The bridegroom chose Michael Halstead, his brother, to be his best man.

The reception at the Rod and Gun Club was attended by approximately 100 persons. Mrs. Raymond Mierzwa and Mrs. Michael Embury assisted with the cutting of the cake, and Linda L. Cole assisted with the guest book.

The couple is presently residing at 511 1/2 Second St., in Jackson. They plan a belated wedding trip to the Bahamas at Christmas.

The bride, the daughter of Mr. and Mrs. Robert B. Devine of 844 Lombardy Dr., North Lake, is presently a senior at Eastern Michigan University. The bridegroom is the son of Mr. and Mrs. Darwin M. Halstead of 5015 Donnelly Rd., Jackson, is a graduate of Jackson Community College and is employed by Steinkamp-Fenton Sheet Metal Co. of Jackson.

The bride-to-be, her mother, and the prospective bridegroom's mother were presented with corsages from the hostess. Decorations of red, white, and green, which will be the wedding colors, were carried out in the floral centerpiece and decorated cake. The bride received numerous gifts.

I think television is becoming duller and duller. My kids are doing their homework again!



Mrs. Daniel Lee Halstead

Family, Friends Host 50th Anniversary Party for A. Marshalls

A dinner and reception Sept. 29 at the Rebekah Hall on Manchester Rd. honored Mr. and Mrs. Arthur Marshall of Marshallville, Ky., on the occasion of their 50th wedding anniversary.

In celebrating what they described as "one of the happiest days of their lives," Mr. and Mrs. Marshall were joined by numerous relatives and friends who presented them with assorted gifts, including a money tree with a total of \$220 representing the leaves.

Attending the reception were: Mr. and Mrs. Earl D. Marshall; Mrs. Laura Marshall, Mr. and Mrs. Jesse Marshall and children; Mr. and Mrs. Ernest Push and children; Mr. and Mrs. Sonny Marshall and children; Mr. and Mrs. James P. Schmitt and children; Ross Marshall, Mr. and Mrs. Daniel Risner, Monroe Sawyer, Mr. and Mrs. Orville Hughes, Mr. and Mrs. Ed Marshall, Mrs. Nancy Arnett, Mr. and Mrs. Everett Risner, Mrs. Loretta Mathews, and Mr. and Mrs. Irving Fletcher.

The couple is presently residing at 511 1/2 Second St., in Jackson. They plan a belated wedding trip to the Bahamas at Christmas.

The bride, the daughter of Mr. and Mrs. Robert B. Devine of 844 Lombardy Dr., North Lake, is presently a senior at Eastern Michigan University. The bridegroom is the son of Mr. and Mrs. Darwin M. Halstead of 5015 Donnelly Rd., Jackson, is a graduate of Jackson Community College and is employed by Steinkamp-Fenton Sheet Metal Co. of Jackson.

The bride-to-be, her mother, and the prospective bridegroom's mother were presented with corsages from the hostess. Decorations of red, white, and green, which will be the wedding colors, were carried out in the floral centerpiece and decorated cake. The bride received numerous gifts.

I think television is becoming duller and duller. My kids are doing their homework again!

The couple is presently residing at 511 1/2 Second St., in Jackson. They plan a belated wedding trip to the Bahamas at Christmas.

The bride, the daughter of Mr. and Mrs. Robert B. Devine of 844 Lombardy Dr., North Lake, is presently a senior at Eastern Michigan University. The bridegroom is the son of Mr. and Mrs. Darwin M. Halstead of 5015 Donnelly Rd., Jackson, is a graduate of Jackson Community College and is employed by Steinkamp-Fenton Sheet Metal Co. of Jackson.

The bride-to-be, her mother, and the prospective bridegroom's mother were presented with corsages from the hostess. Decorations of red, white, and green, which will be the wedding colors, were carried out in the floral centerpiece and decorated cake. The bride received numerous gifts.

I think television is becoming duller and duller. My kids are doing their homework again!

The couple is presently residing at 511 1/2 Second St., in Jackson. They plan a belated wedding trip to the Bahamas at Christmas.

The bride, the daughter of Mr. and Mrs. Robert B. Devine of 844 Lombardy Dr., North Lake, is presently a senior at Eastern Michigan University. The bridegroom is the son of Mr. and Mrs. Darwin M. Halstead of 5015 Donnelly Rd., Jackson, is a graduate of Jackson Community College and is employed by Steinkamp-Fenton Sheet Metal Co. of Jackson.

The bride-to-be, her mother, and the prospective bridegroom's mother were presented with corsages from the hostess. Decorations of red, white, and green, which will be the wedding colors, were carried out in the floral centerpiece and decorated cake. The bride received numerous gifts.

I think television is becoming duller and duller. My kids are doing their homework again!

The couple is presently residing at 511 1/2 Second St., in Jackson. They plan a belated wedding trip to the Bahamas at Christmas.

The bride, the daughter of Mr. and Mrs. Robert B. Devine of 844 Lombardy Dr., North Lake, is presently a senior at Eastern Michigan University. The bridegroom is the son of Mr. and Mrs. Darwin M. Halstead of 5015 Donnelly Rd., Jackson, is a graduate of Jackson Community College and is employed by Steinkamp-Fenton Sheet Metal Co. of Jackson.

The bride-to-be, her mother, and the prospective bridegroom's mother were presented with corsages from the hostess. Decorations of red, white, and green, which will be the wedding colors, were carried out in the floral centerpiece and decorated cake. The bride received numerous gifts.

I think television is becoming duller and duller. My kids are doing their homework again!

The couple is presently residing at 511 1/2 Second St., in Jackson. They plan a belated wedding trip to the Bahamas at Christmas.

The bride, the daughter of Mr. and Mrs. Robert B. Devine of 844 Lombardy Dr., North Lake, is presently a senior at Eastern Michigan University. The bridegroom is the son of Mr. and Mrs. Darwin M. Halstead of 5015 Donnelly Rd., Jackson, is a graduate of Jackson Community College and is employed by Steinkamp-Fenton Sheet Metal Co. of Jackson.

The bride-to-be, her mother, and the prospective bridegroom's mother were presented with corsages from the hostess. Decorations of red, white, and green, which will be the wedding colors, were carried out in the floral centerpiece and decorated cake. The bride received numerous gifts.

I think television is becoming duller and duller. My kids are doing their homework again!

The couple is presently residing at 511 1/2 Second St., in Jackson. They plan a belated wedding trip to the Bahamas at Christmas.

The bride, the daughter of Mr. and Mrs. Robert B. Devine of 844 Lombardy Dr., North Lake, is presently a senior at Eastern Michigan University. The bridegroom is the son of Mr. and Mrs. Darwin M. Halstead of 5015 Donnelly Rd., Jackson, is a graduate of Jackson Community College and is employed by Steinkamp-Fenton Sheet Metal Co. of Jackson.

The bride-to-be, her mother, and the prospective bridegroom's mother were presented with corsages from the hostess. Decorations of red, white, and green, which will be the wedding colors, were carried out in the floral centerpiece and decorated cake. The bride received numerous gifts.

I think television is becoming duller and duller. My kids are doing their homework again!

The couple is presently residing at 511 1/2 Second St., in Jackson. They plan a belated wedding trip to the Bahamas at Christmas.

The bride, the daughter of Mr. and Mrs. Robert B. Devine of 844 Lombardy Dr., North Lake, is presently a senior at Eastern Michigan University. The bridegroom is the son of Mr. and Mrs. Darwin M. Halstead of 5015 Donnelly Rd., Jackson, is a graduate of Jackson Community College and is employed by Steinkamp-Fenton Sheet Metal Co. of Jackson.

The bride-to-be, her mother, and the prospective bridegroom's mother were presented with corsages from the hostess. Decorations of red, white, and green, which will be the wedding colors, were carried out in the floral centerpiece and decorated cake. The bride received numerous gifts.

I think television is becoming duller and duller. My kids are doing their homework again!

The couple is presently residing at 511 1/2 Second St., in Jackson. They plan a belated wedding trip to the Bahamas at Christmas.

The bride, the daughter of Mr. and Mrs. Robert B. Devine of 844 Lombardy Dr., North Lake, is presently a senior at Eastern Michigan University. The bridegroom is the son of Mr. and Mrs. Darwin M. Halstead of 5015 Donnelly Rd., Jackson, is a graduate of Jackson Community College and is employed by Steinkamp-Fenton Sheet Metal Co. of Jackson.

The bride-to-be, her mother, and the prospective bridegroom's mother were presented with corsages from the hostess. Decorations of red, white, and green, which will be the wedding colors, were carried out in the floral centerpiece and decorated cake. The bride received numerous gifts.

I think television is becoming duller and duller. My kids are doing their homework again!

The couple is presently residing at 511 1/2 Second St., in Jackson. They plan a belated wedding trip to the Bahamas at Christmas.

The bride, the daughter of Mr. and Mrs. Robert B. Devine of 844 Lombardy Dr., North Lake, is presently a senior at Eastern Michigan University. The bridegroom is the son of Mr. and Mrs. Darwin M. Halstead of 5015 Donnelly Rd., Jackson, is a graduate of Jackson Community College and is employed by Steinkamp-Fenton Sheet Metal Co. of Jackson.

The bride-to-be, her mother, and the prospective bridegroom's mother were presented with corsages from the hostess. Decorations of red, white, and green, which will be the wedding colors, were carried out in the floral centerpiece and decorated cake. The bride received numerous gifts.

I think television is becoming duller and duller. My kids are doing their homework again!

The couple is presently residing at 511 1/2 Second St., in Jackson. They plan a belated wedding trip to the Bahamas at Christmas.

The bride, the daughter of Mr. and Mrs. Robert B. Devine of 844 Lombardy Dr., North Lake, is presently a senior at Eastern Michigan University. The bridegroom is the son of Mr. and Mrs. Darwin M. Halstead of 5015 Donnelly Rd., Jackson, is a graduate of Jackson Community College and is employed by Steinkamp-Fenton Sheet Metal Co. of Jackson.

The bride-to-be, her mother, and the prospective bridegroom's mother were presented with corsages from the hostess. Decorations of red, white, and green, which will be the wedding colors, were carried out in the floral centerpiece and decorated cake. The bride received numerous gifts.

I think television is becoming duller and duller. My kids are doing their homework again!

The couple is presently residing at 511 1/2 Second St., in Jackson. They plan a belated wedding trip to the Bahamas at Christmas.

The bride, the daughter of Mr. and Mrs. Robert B. Devine of 844 Lombardy Dr., North Lake, is presently a senior at Eastern Michigan University. The bridegroom is the son of Mr. and Mrs. Darwin M. Halstead of 5015 Donnelly Rd., Jackson, is a graduate of Jackson Community College and is employed by Steinkamp-Fenton Sheet Metal Co. of Jackson.

The bride-to-be, her mother, and the prospective bridegroom's mother were presented with corsages from the hostess. Decorations of red, white, and green, which will be the wedding colors, were carried out in the floral centerpiece and decorated cake. The bride received numerous gifts.

I think television is becoming duller and duller. My kids are doing their homework again!

The couple is presently residing at 511 1/2 Second St., in Jackson. They plan a belated wedding trip to the Bahamas at Christmas.

The bride, the daughter of Mr. and Mrs. Robert B. Devine of 844 Lombardy Dr., North Lake, is presently a senior at Eastern Michigan University. The bridegroom is the son of Mr. and Mrs. Darwin M. Halstead of 5015 Donnelly Rd., Jackson, is a graduate of Jackson Community College and is employed by Steinkamp-Fenton Sheet Metal Co. of Jackson.

Boots Available For Nearly All Occasions

Boots can serve many purposes, and choosing the right pair is important, says Bernette Kahabka, Michigan State University extension clothing and textile specialist.

"Whatever style of boot, and fashion emphasis you're looking for—whether rough-and-tumble, casual or dressy wear—you can find it in the stores today," the specialist says.

A sturdily made boot with a pile lining is a good buy for cold, snowy weather. These boots can be made of leather, suede or man-made materials.

"Acrylic, polyester or polypropylene are most often used for the pile linings," she explains, "because they won't mat as easily as wool and are often treated to prevent odor and mildew."

"Fashion boots" for fall and spring should be considered more of a shoe than a boot. They are either unlined or lined with a lightweight nylon or cotton.

The only truly waterproof boots are made of molded vinyl or rubber and constructed without seams. To be sure they are waterproof, Miss Kahabka advises checking the zipper (as well as the material and construction) to make sure no water can leak through.

Most leather, suede and fabric boots can be made water repellent with the use of silicone. Water-repellent boots will shed only light rain or snow. Silicone sprays also help protect against rock-salt stains.

"Proper care of boots," the specialist says, "will increase their wearing life and appearance." Vinyl or rubber boots should be cleaned with a sudsy sponge and wiped dry with a cloth.

Lightly soiled suede boots may be cleaned by brushing with a suede brush. If they become heavily soiled, a commercial suede cleaner may do the trick.

Polishing leather boots before wearing will help build up a protective coating, Miss Kahabka explains. It is important to remove scuffs and stains as soon as possible.

To clean your leather boots, use a damp sponge and saddle soap and follow with an application of cream or paste polish. There are commercial stain removers for leathers, too. Leather and suede boots should both be dried away from direct heat.

"Your vacuum cleaner is ideal for cleaning the linings in your boots," she says. "If the lining gets wet, insert the hose of a hair dryer and you'll be ready to go in a short time."

BAKE THE BACON

When preparing a quantity of bacon for a large gathering at the breakfast, brunch, lunch or dinner table, do it the easy way—in the oven. Just separate bacon slices and place on jelly roll pan. Bake in a hot oven (400 degrees F.) 10 minutes. Carefully pour off drippings. Return to oven and bake 2 to 5 minutes longer.

Some 60 million Americans are protected by some form of "short term" insurance protection against loss of income in case they are disabled.

What about the cost of living (elsewhere) while they fix your apartment?

In our Homeowners Policy for apartment dwellers, it can all be down in black and white so that we would be paying your additional living expenses while it's being repaired! It's comforting to know that if you have to live elsewhere temporarily, as a result of fire, explosion, theft and other unexpected events, you could count on us to see you through. Give us a call today. We'll keep it altogether for you!

it's better altogether

A. D. MAYER AGENCY, INC.

115 PARK ST., CHELSEA
BOB BARLOW, AGENT
PHONE 475-2030

Auto-Owners Insurance

LifeHomeCarBusiness

Dorothy Ortring, Director

VIVIANE WOODWARD

COSMETICS

475-8785

WINANS JEWELRY

Rings enlarged to show detail. Trade-Mark-Reg.

Let's make a trade

Your old diamond for a luxurious, new Keepsake diamond ring. We have a sparkling array to choose from—all fully guaranteed!

Keepsake REGISTERED DIAMOND JEWELRY

Keepsake REGISTERED DIAMOND JEWELRY

WINTERSET

Let's make a trade

Your old diamond for a luxurious, new Keepsake diamond ring. We have a sparkling array to choose from—all fully guaranteed!

Keepsake REGISTERED DIAMOND JEWELRY

Keepsake REGISTERED DIAMOND JEWELRY

WINTERSET

Let's make a trade

Your old diamond for a luxurious, new Keepsake diamond ring. We have a sparkling array to choose from—all fully guaranteed!

Keepsake REGISTERED DIAMOND JEWELRY

Keepsake REGISTERED DIAMOND JEWELRY

WINTERSET

Let's make a trade

Your old diamond for a luxurious, new Keepsake diamond ring. We have a sparkling array to choose from—all fully guaranteed!

Keepsake REGISTERED DIAMOND JEWELRY

Keepsake REGISTERED DIAMOND JEWELRY

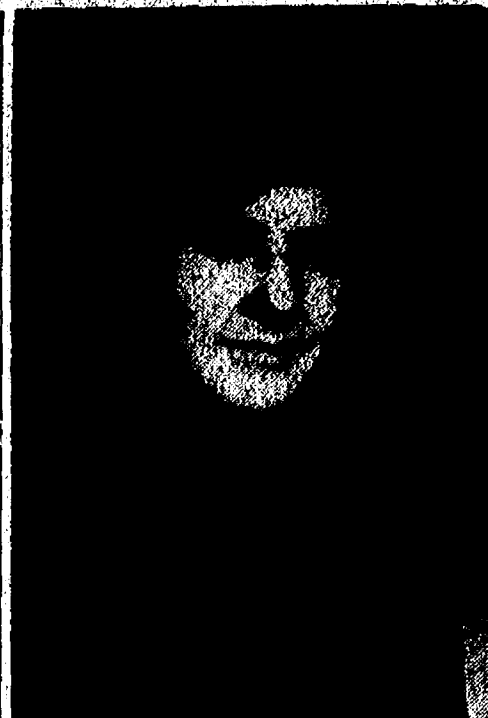
WINTERSET

Let's make a trade

Your old diamond for a luxurious, new Keepsake diamond ring. We have a sparkling array to choose from—all fully guaranteed!

Keepsake REGISTERED DIAMOND JEWELRY

Keepsake REGISTERED DIAMOND JEWELRY



McCLAIN-SIVEC: Mr. and Mrs. Donald McKimley have announced the engagement of their daughter, Sheri Lynn McClain, to Andrew Thomas Sivec. The bride-to-be is a 1972 graduate of Chelsea High school who is presently attending Ferris State College. Her fiancé is the son of Mr. and Mrs. Andrew Sivec of Huntington, N.Y., and also a student at Ferris. The couple plan a September wedding.

"Acrylic, polyester or polypropylene are most often used for the pile linings," she explains, "because they won't mat as easily as wool and are often treated to prevent odor and mildew."

"Fashion boots" for fall and spring should be considered more of a shoe than a boot. They are either unlined or lined with a lightweight nylon or cotton.

The only truly waterproof boots are made of molded vinyl or rubber and constructed without seams. To be sure they are waterproof, Miss Kahabka advises checking the zipper (as well as the material and construction) to make sure no water can leak through.

Most leather, suede and fabric boots can be made water repellent with the use of silicone. Water-repellent boots will shed only light rain or snow. Silicone sprays also help protect against rock-salt stains.

"Proper care of boots," the specialist says, "will increase their wearing life and appearance." Vinyl or rubber boots should be cleaned with a sudsy sponge and wiped dry with a cloth.

Lightly soiled suede boots may be cleaned by brushing with a suede brush. If they become heavily soiled, a commercial suede cleaner may do the trick.

Polishing leather boots before wearing will help build up a protective coating, Miss Kahabka explains. It is important to remove scuffs and stains as soon as possible.

To clean your leather boots, use a damp sponge and saddle soap and follow with an application of cream or paste polish. There are commercial stain removers for leathers, too. Leather and suede boots should both be dried away from direct heat.

"Your vacuum cleaner is ideal for cleaning the linings in your boots," she says. "If the lining gets wet, insert the hose of a hair dryer and you'll be ready to go in a short time."

BAKE THE BACON

When preparing a quantity of bacon for a large gathering at the breakfast, brunch, lunch or dinner table, do it the easy way—in the oven. Just separate bacon slices and place on jelly roll pan. Bake in a hot oven (400 degrees F.) 10 minutes. Carefully pour off drippings. Return to oven and bake 2 to 5 minutes longer.

Some 60 million Americans are protected by some form of "short term" insurance protection against loss of income in case they are disabled.

What about the cost of living (elsewhere) while they fix your apartment?

In our Homeowners Policy for apartment dwellers, it can all be down in black and white so that we would be paying your additional living expenses while it's being repaired! It's comforting to know that if you have to live elsewhere temporarily, as a result of fire, explosion, theft and other unexpected events, you could count on us to see you through. Give us a call today. We'll keep it altogether for you!

it's better altogether

A. D. MAYER AGENCY, INC.

115 PARK ST., CHELSEA
BOB BARLOW, AGENT
PHONE 475-2030

Auto-Owners Insurance

LifeHomeCarBusiness

Dorothy Ortring, Director

VIVIANE WOODWARD

COSMETICS

475-8785

WINANS JEWELRY

Rings enlarged to show detail. Trade-Mark-Reg.

Let's make a trade

Your old diamond for a luxurious, new Keepsake diamond ring. We have a sparkling array to choose from—all fully guaranteed!

Keepsake REGISTERED DIAMOND JEWELRY

Keepsake REGISTERED DIAMOND JEWELRY

WINTERSET

Let's make a trade

Your old diamond for a luxurious, new Keepsake diamond ring. We have a sparkling array to choose from—all fully guaranteed!

Keepsake REGISTERED DIAMOND JEWELRY

Keepsake REGISTERED DIAMOND JEWELRY

WINTERSET

Let's make a trade

Community Calendar

Chelsea Community Fair Nov. 6, 8 p.m. at Chelsea Community Center, 207 E. Middle St. Admission: Free. Refreshments: Free.

Chelsea Community Center Nov. 6, 8 p.m. at Chelsea Community Center, 207 E. Middle St. Admission: Free. Refreshments: Free.

Chelsea Community Center Nov. 6, 8 p.m. at Chelsea Community Center, 207 E. Middle St. Admission: Free. Refreshments: Free.

Chelsea Community Center Nov. 6, 8 p.m. at Chelsea Community Center, 207 E. Middle St. Admission: Free. Refreshments: Free.

Chelsea Community Center Nov. 6, 8 p.m. at Chelsea Community Center, 207 E. Middle St. Admission: Free. Refreshments: Free.

Chelsea Community Center Nov. 6, 8 p.m. at Chelsea Community Center, 207 E. Middle St. Admission: Free. Refreshments: Free.

Chelsea Community Center Nov. 6, 8 p.m. at Chelsea Community Center, 207 E. Middle St. Admission: Free. Refreshments: Free.

Chelsea Community Center Nov. 6, 8 p.m. at Chelsea Community Center, 207 E. Middle St. Admission: Free. Refreshments: Free.

Chelsea Community Center Nov. 6, 8 p.m. at Chelsea Community Center, 207 E. Middle St. Admission: Free. Refreshments: Free.

Chelsea Community Center Nov. 6, 8 p.m. at Chelsea Community Center, 207 E. Middle St. Admission: Free. Refreshments: Free.

Chelsea Community Center Nov. 6, 8 p.m. at Chelsea Community Center, 207 E. Middle St. Admission: Free. Refreshments: Free.

Chelsea Community Center Nov. 6, 8 p.m. at Chelsea Community Center, 207 E. Middle St. Admission: Free. Refreshments: Free.

Chelsea Community Center Nov. 6, 8 p.m. at Chelsea Community Center, 207 E. Middle St. Admission: Free. Refreshments: Free.

Chelsea Community Center Nov. 6, 8 p.m. at Chelsea Community Center, 207 E. Middle St. Admission: Free. Refreshments: Free.

Chelsea Community Center Nov. 6, 8 p.m. at Chelsea Community Center, 207 E. Middle St. Admission: Free. Refreshments: Free.

Chelsea Community Center Nov. 6, 8 p.m. at Chelsea Community Center, 207 E. Middle St. Admission: Free. Refreshments: Free.

Chelsea Community Center Nov. 6, 8 p.m. at Chelsea Community Center, 207 E. Middle St. Admission: Free. Refreshments: Free.

Chelsea Community Center Nov. 6, 8 p.m. at Chelsea Community Center, 207 E. Middle St. Admission: Free. Refreshments: Free.

Chelsea Community Center Nov. 6, 8 p.m. at Chelsea Community Center, 207 E. Middle St. Admission: Free. Refreshments: Free.

Chelsea Community Center Nov. 6, 8 p.m. at Chelsea Community Center, 207 E. Middle St. Admission: Free. Refreshments: Free.

Chelsea Community Center Nov. 6, 8 p.m. at Chelsea Community Center, 207 E. Middle St. Admission: Free. Refreshments: Free.

Chelsea Community Center Nov. 6, 8 p.m. at Chelsea Community Center, 207 E. Middle St. Admission: Free. Refreshments: Free.



EASTER LILIES AT HALLOWEEN seem more than a bit out of place, but that's what popped up in Mrs. Fred Schultz' garden last week. Noting that, "We've already had a frost," Mrs. Schultz found the flowers in full bloom amid falling autumn leaves on Tuesday. She lives at 20181 W. Old US-12.

School Board Briefs

This special meeting of the Chelsea Board of Education was called to order by President Hasel-schmidt at 8:10 p.m., Monday, Oct. 29. Present were Hasel-schmidt, Schaefer, Irwin, Daniels, Hodgson, Stirling, Principals Wojcik, Konkin, and Benedict, and Superintendent Cameron. Absent was Trustee Koenig.

The board heard the reading of the bonding proposal, section by section. Discussion followed on wording within the proposal and the pay-off table. It was moved by Stirling, supported by Daniels, that the board accept the proposal. Vote: all ayes by roll call vote.

Attention was drawn to the Washtenaw County school office association meeting scheduled for Oct. 31, and the Milan swimming pool visit slated for Nov. 1.

Discussion was held on publicity for the bond issue vote and voter registration, particularly of recent high school grads and new residents.

Meeting was adjourned at 9:30 p.m.

Stolen Auto Recovered By Taylor Police

A Cassidy Lake Training school walkaway suspected of stealing a 1972 Chevrolet Caprice from Lloyd Bridges Chevrolet several weeks ago has been arrested in Taylor in a similar attempt at breaking and entering.

Chelsea Police say they received word from Officer Meyers of the Taylor Police Department last Monday that an automobile identified as the stolen one, but bearing different license plates, had been recovered in an arrest at Walt Lazar's Chevrolet in Taylor.

Four males were arrested inside the body shop at the dealership and charged with breaking and entering. A handgun stolen from Joe's Mobil at Zeeb Rd. and I-94 the same night as the local auto theft was also recovered in the arrest.

Upon investigation of the car for fingerprints, however, Detective Patterson, of the Washtenaw County Sheriff's office, found none, which makes it impossible for local police to prosecute for either the unlawful driving away of an auto or possession of stolen property.

Arrested were Robert Gholston, Jr., 1051 Liebold, Detroit; Harry C. Eady, 1084 Littledale, Detroit; Dwayne Jackson, 1292 Liebold, Detroit; and a juvenile. Dwayne Jackson is apparently an alias assumed by Charles Johnson, the Cassidy Lake escapee.

While admitting their lack of evidence in the case, Chelsea Police point out the absence of any real need for them to prosecute, since Johnson is being charged with breaking and entering in the Taylor case, as well as escape from Cassidy Lake.

SEASIDE LAKE?

Lake Superior is second in size only to the salty Caspian Sea, which is also a lake by definition—being completely surrounded by land.

SEASIDE LAKE?

Lake Superior is second in size only to the salty Caspian Sea, which is also a lake by definition—being completely surrounded by land.

SEASIDE LAKE?

Lake Superior is second in size only to the salty Caspian Sea, which is also a lake by definition—being completely surrounded by land.

SEASIDE LAKE?

Lake Superior is second in size only to the salty Caspian Sea, which is also a lake by definition—being completely surrounded by land.

SEASIDE LAKE?

Lake Superior is second in size only to the salty Caspian Sea, which is also a lake by definition—being completely surrounded by land.

SEASIDE LAKE?

Lake Superior is second in size only to the salty Caspian Sea, which is also a lake by definition—being completely surrounded by land.

DEATHS

Mrs. William Tite, Sr.

Dies Saturday at Chelsea Community Hospital

Mrs. William (Dorothy) Tite, Sr., 71, 101 E. Michigan, Jackson, died Saturday, Oct. 27 at Chelsea Community Hospital at the age of 78. She was a former resident of Chelsea.

Born July 23, 1895, in Meshoppen, Pa., she was a member of St. Paul United Church of Christ and the Association of Retired People.

She is survived by her husband, William; two sons, William, Jr., of Chelsea, and Robert of Menlo Park, Calif.; a sister, Mrs. Julia Jones, of Pittsford, N. Y.; two grandsons and two granddaughters.

Cremation has taken place. A memorial service for Mrs. Tite was conducted Wednesday, Oct. 31, at 1 p.m. at the Burghardt Funeral Home, by the Rev. Warner Siebert.

Memorial contributions may be made to St. Paul United Church of Christ.

Frosh Gridders Scalped By Tecumseh, 38-6

Chelsea freshmen gridders traveled to Tecumseh Wednesday, where the young Indians proceeded to scalp them, 38-6.

It was a back and forth game for the first quarter, with Tecumseh scoring first with 10 seconds left. They scored again early in the second period to take a 14-0 lead.

Little Bulldog spirits were lifted, however, when Mike Check scored on an 80-yard run, but they sagged once more when Tecumseh returned with another touchdown with two minutes remaining in the half.

A Tecumseh touchdown midway through the third quarter capped a drive and ended any chance Chelsea might have been dreaming of. The final score came three minutes later, to put the tally at an uninspiring 38-6.

Coach Bill Bainton noted a few bright spots in the defeat, as he remarked, "The defense made some big plays and crisp hits, but the offense opened several big holes, but the usual hustle sort of disappeared."

Bainton did pinpoint several players for their contributions, however. Mike Check and Bruce Stubbs ran well, he said; Dan Cobb did a fine job in his first start at offensive guard, as did Howard Bush at defensive end.

Tuesday, the freshmen met arch-rival Dexter on the home front.

Stereo Set Stolen Friday

Stereo addicts all over the county can groan in sympathetic harmony at the burglary that deprived Mr. and Mrs. Craig Hall of what must have been one of their prized possessions.

Stolen Friday while the Halls were working was their Panasonic tuner and turntable and four—yes, four—speakers, valued at \$400.

Also taken was a three-foot tall table lamp with large wicker shade, valued at \$20.

Officers say that the thieves picked up their findings and walked out the front door, which was standing open when the Halls returned.

An old red Rambler automobile was observed unoccupied in front of the house on Washington St. at approximately 4:30 p.m. Police are continuing investigation of this information and other aspects of the case.

SEASIDE LAKE?

Lake Superior is second in size only to the salty Caspian Sea, which is also a lake by definition—being completely surrounded by land.

SEASIDE LAKE?

Lake Superior is second in size only to the salty Caspian Sea, which is also a lake by definition—being completely surrounded by land.

SEASIDE LAKE?

Lake Superior is second in size only to the salty Caspian Sea, which is also a lake by definition—being completely surrounded by land.

SEASIDE LAKE?

Lake Superior is second in size only to the salty Caspian Sea, which is also a lake by definition—being completely surrounded by land.

SEASIDE LAKE?

Lake Superior is second in size only to the salty Caspian Sea, which is also a lake by definition—being completely surrounded by land.

SEASIDE LAKE?

Lake Superior is second in size only to the salty Caspian Sea, which is also a lake by definition—being completely surrounded by land.

SEASIDE LAKE?

Lake Superior is second in size only to the salty Caspian Sea, which is also a lake by definition—being completely surrounded by land.

SEASIDE LAKE?

Lake Superior is second in size only to the salty Caspian Sea, which is also a lake by definition—being completely surrounded by land.



CUB SCOUTS OF PACK 455 trudged five miles down the Potawatomi Trail from Silver Lake to the Bruin Lake Boy Scout camp last Saturday, where they met their parents and indulged in the hearty outdoor grub at a cookout. Above, scouts and leaders gathered for a photo. Front row, from left are Bob Roy, Ron Harris, Todd Otto, Jeff Haist, John Hoffman, Miss Fletcher. Second row: Scott Otto, Don Bradshaw, Andy Fletcher, Kip Bertke, Steve Hughes, Jim Banks, Russ Harris, Tim Roy, Mike Muck, Rodney Roberson, MaryAnn Hughes. Third row: Dave Wojcicki, Randy Krichbaum, Roland Klink, Mike Stauch, Troy Otto, Phil Hoffman, Dane Tompkins, Rick Eder. Back row: Bob Bertke, Bill Muck, Fred Hoffman, Phil Roy, Dorothy Fletcher (den mother), Barb Hughes (den mother), Barb Haist.

Special Registration Arranged Saturday for School Election

Clerks from the seven townships comprising the Chelsea School District will be available Saturday morning Nov. 3, from 10 a.m. to 1 p.m. to register voters, as part of efforts by concerned citizens to assure that all eligible to vote are registered for the Dec. 17 millage election.

Citizens need only to have resided within the district for 30 days to qualify for registration. There are no property ownership requirements. Deadline for registration for the millage election is Nov. 16.

Superintendent of Schools Charles Cameron said Tuesday that, "a small number of people may only be registered with the village clerk, which qualifies them to vote only in village municipal elections."

"Only registering with the township clerk allows voting in school, state, and national elections," Cameron explained.

Voters who are uncertain as to their status, either because they have failed to vote in a long while, or because they may not be registered with the township clerk, should contact either their township clerk or Chelsea High School, which has duplicate files of all voters registered for school elections.

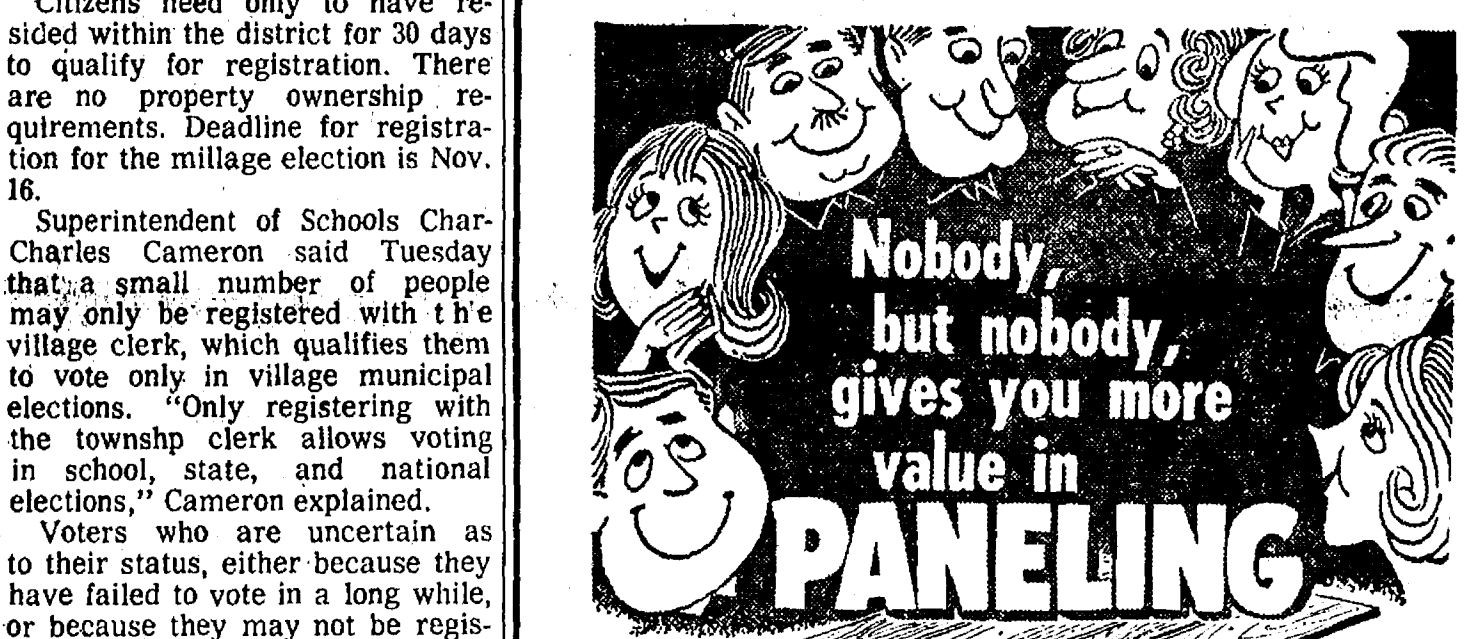
Clerks from Lima, Sylvan, Lyndon, Dexter, Waterloo, Sharon, and Freedom townships will be available Saturday.

Mrs. Betty Cox, who has been co-ordinating telephone efforts to contact new residents who are eligible to vote, says that her list of "new people" has been compiled from lists of homes where new water meters have been installed, and from lists of new children in Chelsea schools. She explains, however, that "a lot of people who live in the country and don't have children haven't been contacted by our callers. We hope they will come into the township hall and register Saturday, anyway."

Attempts are also being made to remind college students registered in Chelsea but living away from the area of the significance of their participation in the election, Mrs. Cox reports. Students are primarily being contacted through the efforts of their parents, she says.

As a further aid to large voter turnout, applications for absentee ballots will be available at the registration at the Township Hall Saturday may still register with their township clerk by Nov. 16.

Again, the time for this special registration is 10 a.m. to 1 p.m. Saturday, and not the 10 a.m. to 5 p.m. time listed on flyers sent to homes earlier this week.



Nobody, but nobody, gives you more value in PANELING

ONE OF THE MOST COMPLETE STOCKS IN THE AREA — ON SALE YEAR 'ROUND AT THE LOWEST POSSIBLE PRICE FOR THE QUALITY OFFERED

30 — WOODS — FINISHES — COLORS

IN 4' x 9' PREFINISHED PANELING

- ★ HUNTING WOOD . . . \$5⁵⁰
- ★ HEIRLOOM CHERRY . . . \$5⁵⁰
- ★ MIST SURFER . . . \$5⁹⁵
- ★ GOLDEN ELM . . . \$5⁹⁵
- ★ STOCKADE WALNUT . . . \$6⁷⁵
- ★ HIGHLAND BIRCH . . . \$7⁹⁵
- ★ TRIESTE TEAK . . . \$14⁹⁵

PRICES SHOWN ARE CASH-N-CARRY. (Delivery is FREE if your order totals \$100!)

CHELSEA LUMBER

For REAL Homeowner Values

GAMBLES

RCA COLOR TV

RCA's fabulous XL-100 in a table model design

\$534⁹⁵

- It's a table model—or with optional stand, it's a roll-over • 100% solid state performance • AccuMatic® color monitor and Automatic Fine Tuning make tuning a snap

Exquisite styling, exquisite viewing—RCA's XL-100

\$599⁰⁰

- 100% Solid State chassis delivers top-level performance • Plug-In AccuMatic® modules • AccuMatic® color monitor locks color within a normal range • Convenient swivel base

COLOR TV YOU CAN COUNT ON!

BIRTHS

A son, Aaron Michael, to Mr. and Mrs. Gene Ledford, 18800 M-52, on Thursday, Oct. 25, at St. Joseph Mercy Hospital, Ann Arbor. Maternal grandparents are Mr. and Mrs. Alton Gieske of Chelsea. Paternal grandparents are Vassel Ledford of Chelsea and Mrs. Thomas Stanlake of Tennessee.

Mobil-Toons

By GLENN

"Perhaps a tank of gas, would help my memory on directions!"

Come in any time for the best service in town!

GLENN'S MOBIL SERVICE

1629 M-52 & I-94
CHELSEA, MICHIGAN
Phone 475-1767
GLENN HEIM PROP.

7% PER ANNUM

passbook certificate accounts

Ann Arbor Federal Savings 7% Passbook Certificate Account represents a solid base for any investment program. Available in amounts of \$1000 or more for 48 months. (Also available are 6% per annum Passbook Certificate Accounts in amounts of \$1000 for 30 months, 6% Passbook Certificate Accounts in amounts of \$1000 for 12 months and regular 5% DAILY INTEREST Passbook Savings accounts, no minimum—withdrawals anytime.) The sound, safe investments... insured to \$20,000 with FSLIC.

ANN ARBOR FEDERAL SAVINGS
Main St., near Old US-12
() Send full details
() Send _____ % Passbook Certificate for \$_____ enclosed.

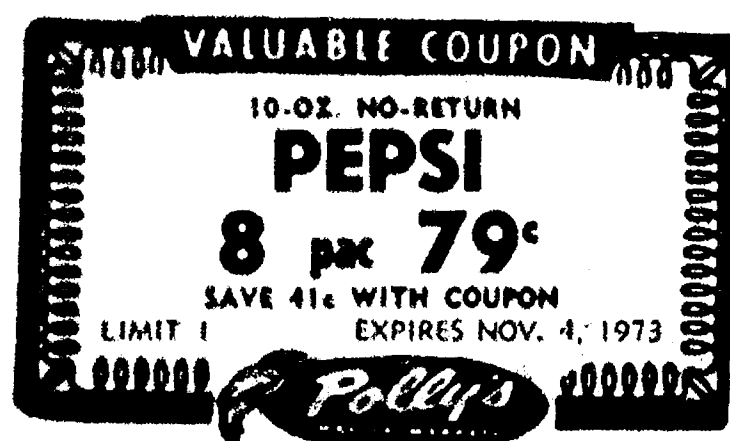
Name _____
Address _____
City _____ Zip _____



1101 M-52, Chelsea
Corner of M-52 and Old US-12
OPEN: 8 to 10 Daily
8 to 7 Sunday

THE PRICE BUSTERS

TURKEYS **49¢**
Parts Missing Limit 1 12-16 Lb. Avg.
RIB STEAK **\$1.29**
USDA CHOICE CENTER CUT FRESH GROUND ALL BEEF
HAMBURG **99¢**
HIGH GRADE POINT CUT
CORN BEEF **\$1.29**
LEAN MEDIUM SIZE
SPARE RIBS **88¢**
PAN READY
FRESH SMELT **59¢**
FRESH
OCEAN PERCH **\$1.29**



SAVE WITH THESE GROCERY VALUES

NORTHERN TISSUE **3** 4-Roll Paks **\$1.00**
DIAL BAR SOAP **3** pak **59¢**
Bath Size
WISK Liquid DETERGENT **\$1.38**
64-Oz.
WELCHADE GRAPE DRINK **29¢**
46-Oz.
Meadowmoor Orange Juice **49¢**
1/2 Gallon
BROOKS CHILI HOT BEANS **18¢**
PURINA CHUCK WAGON
DOG FOOD, chunky, chicken **99¢**
5 Lbs.
REYNOLDS WRAP **25¢**
25-Ft. Roll
SWISS MISS INS. COCOA **69¢**
14 Env.
PET NON-FAT DRY MILK **\$2.69**
20-Qt.
CONTADINA STEWED TOMATOES **21¢**
14.5-OZ. CAN
LA CHOY MEAT BI-PAKS **99¢**
42.5 Oz.
KELLOGGS STUF **39¢**
5-Oz. Pkg.
FROZEN FOOD SPECTACULAR
BORDEN TWIN POP STIX **39¢**
12 Pak
ORE IDA GOLDEN FRENCH FRIES, 2 lbs. **39¢**
ORE IDA COTTAGE FRIES, 2 lbs., KINKLE CUT, 2 lbs. **39¢**
10-OZ. QUEEN OF SCOT
BROCCOLI SPEARS - BRUSSEL SPROUTS - CAULIFLOWER **29¢**
PUMPKIN PIE **99¢**
10" Harris Crown Deluxe
PARKAY MARGARINE **49¢**
Soft Maxi Cup Lb.

POLLY'S FEATURE
Fresh Baked Goods - Baked Fresh Daily
Same-Day Dry Cleaning Service
Photo Processing Service
Fine Import and Domestic Wines
Cold Beer at Low, Low Prices
Carry-Out Service-Open 7 Days a Week
WE ARE THE SERVICE PEOPLE

STANDING RIB **99¢**
4-7 Rib Lb.
STANDING RIB **\$1.19**
1-4 Rib Lb.
BONANZA HAM **\$1.59**
Whole Lb.
PORK STEAK **99¢**
1b.
HOT DOGS **88¢**
12-Oz. Pkg.
FRESH OYSTERS **\$1.49**
10-Oz. Tin
WHITEFISH **\$1.19**
1b.

THE FRESHEST PRODUCE At The Best Prices in Town

MICH. POTATOES **10 lbs. 69¢**
U. S. NO. 1
CELERY **29¢**
FRESH CRISP
FLORIDA GRAPEFRUIT **79¢**
FRESH FROM 5-Lb. Bag
YELLOW ONIONS **45¢**
3-Lb. Bag
CAULIFLOWER **49¢**
Head
FRESH LOUISIANA YAMS **23¢**
Lb.
FLORIDA ORANGES **89¢**
FRESH FROM 5-Lb. Bag

Due to a mix-up in ordering Polly's have run short of ad items in the last 2 weeks. It is not our intention or has it ever been our intention of doing this. We apologize and will correct it in the future.

SUNDAY & MONDAY NOV. 4-5 ONLY
WHOLE FRYERS **39¢**
Limit 2 Please Lb.
HOMO MILK **99¢**
Limit 2 Please
ICE CREAM **59¢**
Limit 2 Please 1/2 Gal.
NATURAL POP **3 for \$1**
28-Oz.
POTATO CHIPS **59¢**
14-OZ.

SHOP POLLY'S & SAVE!

The Chelsea Standard

Second Section—Pages 9-16
Chelsea, Michigan, Thursday, Nov. 1, 1973



ANNE MCKERNAN

Anne McKernan Is Member Of MSU Homecoming Court

Sandwiched somewhere amid the sauerkraut and polka at Michigan State University's "Oktoberfest" Saturday will be Anne McKernan. Anne, a 1972 graduate of Chelsea High school and the daughter of Mr. and Mrs. Mark McKernan of 20179 McKernan Dr., has been selected as a member of the 1973 Homecoming court at MSU.

In her official capacities, she and other members of the court will preside over traditional German festival activities like a kissing marathon, a sauerkraut eating contest, and a polka contest. In addition, as just another Michigan Stater attending the celebration in Jenison Fieldhouse after the MSU-Wisconsin game, she'll be able to stuff herself with German food and maybe indulge in a little German-style stepping out to the music of Die Rheinlanders, a German band.

Anne is an MSU sophomore who serves as a resident assistant in Yakeley dormitory.

RELEASED TIME PROGRAM
A "released time" program is in its third year in Lansing. Under the program permitted by an act of the Michigan legislature, public school students are permitted to be away from their schools for two hours each week to take religious education classes. The Lansing released time program is conducted for students from eight area school districts.



Bold Suits You Can Wear in Good Taste!

If anybody can get you to try something new in a suit, it's Curlee! Like contrast stitches . . . or side vents . . . or maybe a soft shoulder model. Why? Because Curlee is the master tailor of the simple fashion statement. And that goes for pattern, color and fabric, too. From bold plaids to solids.

Come in and see what looks best on you.

\$100.00

STRIETER'S MEN'S WEAR
"The Place To Go For Brands You Know"

WANT ADS

Automotive Rust Proofing Cars and Trucks

Village Motor Sales, Inc.
IMPERIAL CHRYSLER
DIVISION - PLYMOUTH
Phone 475-8888
1800 Manchester Rd. Chelsea
Hours: 9 a.m. to 5 p.m.
Phone Show Room: 10 a.m. to 5 p.m. Saturday
10 a.m. to 1 p.m. Sunday

CUSTOM PAINTING

Painting - Family Apple
Landing - Colorbonding
Auto Body Work
Painting Our Specialty
CARS - MOTORCYCLES
SNOWMOBILES - BOATS
Complete Fiberglass Repair

Village Motor Sales, Inc.
1100 Manchester Rd., Chelsea
Phone 475-8888

Nobody's Perfect, Houses Aren't Either!

LARGE OLDER HOME on a quiet street in village of Manchester. Needs someone who cares to make it into a dream home.

VACANT LAND - 1 one-third 2, 6.6, 11, 20, 31.5, 33, 38.3, 40, 41, 42, 43, 44, 45, 46, 47, 48, 49, 50, 51, 52, 53, 54, 55, 56, 57, 58, 59, 60, 61, 62, 63, 64, 65, 66, 67, 68, 69, 70, 71, 72, 73, 74, 75, 76, 77, 78, 79, 80, 81, 82, 83, 84, 85, 86, 87, 88, 89, 90, 91, 92, 93, 94, 95, 96, 97, 98, 99, 100, 101, 102, 103, 104, 105, 106, 107, 108, 109, 110, 111, 112, 113, 114, 115, 116, 117, 118, 119, 120, 121, 122, 123, 124, 125, 126, 127, 128, 129, 130, 131, 132, 133, 134, 135, 136, 137, 138, 139, 140, 141, 142, 143, 144, 145, 146, 147, 148, 149, 150, 151, 152, 153, 154, 155, 156, 157, 158, 159, 160, 161, 162, 163, 164, 165, 166, 167, 168, 169, 170, 171, 172, 173, 174, 175, 176, 177, 178, 179, 180, 181, 182, 183, 184, 185, 186, 187, 188, 189, 190, 191, 192, 193, 194, 195, 196, 197, 198, 199, 200, 201, 202, 203, 204, 205, 206, 207, 208, 209, 210, 211, 212, 213, 214, 215, 216, 217, 218, 219, 220, 221, 222, 223, 224, 225, 226, 227, 228, 229, 230, 231, 232, 233, 234, 235, 236, 237, 238, 239, 240, 241, 242, 243, 244, 245, 246, 247, 248, 249, 250, 251, 252, 253, 254, 255, 256, 257, 258, 259, 260, 261, 262, 263, 264, 265, 266, 267, 268, 269, 270, 271, 272, 273, 274, 275, 276, 277, 278, 279, 280, 281, 282, 283, 284, 285, 286, 287, 288, 289, 290, 291, 292, 293, 294, 295, 296, 297, 298, 299, 300, 301, 302, 303, 304, 305, 306, 307, 308, 309, 310, 311, 312, 313, 314, 315, 316, 317, 318, 319, 320, 321, 322, 323, 324, 325, 326, 327, 328, 329, 330, 331, 332, 333, 334, 335, 336, 337, 338, 339, 340, 341, 342, 343, 344, 345, 346, 347, 348, 349, 350, 351, 352, 353, 354, 355, 356, 357, 358, 359, 360, 361, 362, 363, 364, 365, 366, 367, 368, 369, 370, 371, 372, 373, 374, 375, 376, 377, 378, 379, 380, 381, 382, 383, 384, 385, 386, 387, 388, 389, 390, 391, 392, 393, 394, 395, 396, 397, 398, 399, 400, 401, 402, 403, 404, 405, 406, 407, 408, 409, 410, 411, 412, 413, 414, 415, 416, 417, 418, 419, 420, 421, 422, 423, 424, 425, 426, 427, 428, 429, 430, 431, 432, 433, 434, 435, 436, 437, 438, 439, 440, 441, 442, 443, 444, 445, 446, 447, 448, 449, 450, 451, 452, 453, 454, 455, 456, 457, 458, 459, 460, 461, 462, 463, 464, 465, 466, 467, 468, 469, 470, 471, 472, 473, 474, 475, 476, 477, 478, 479, 480, 481, 482, 483, 484, 485, 486, 487, 488, 489, 490, 491, 492, 493, 494, 495, 496, 497, 498, 499, 500, 501, 502, 503, 504, 505, 506, 507, 508, 509, 510, 511, 512, 513, 514, 515, 516, 517, 518, 519, 520, 521, 522, 523, 524, 525, 526, 527, 528, 529, 530, 531, 532, 533, 534, 535, 536, 537, 538, 539, 540, 541, 542, 543, 544, 545, 546, 547, 548, 549, 550, 551, 552, 553, 554, 555, 556, 557, 558, 559, 560, 561, 562, 563, 564, 565, 566, 567, 568, 569, 570, 571, 572, 573, 574, 575, 576, 577, 578, 579, 580, 581, 582, 583, 584, 585, 586, 587, 588, 589, 590, 591, 592, 593, 594, 595, 596, 597, 598, 599, 600, 601, 602, 603, 604, 605, 606, 607, 608, 609, 610, 611, 612, 613, 614, 615, 616, 617, 618, 619, 620, 621, 622, 623, 624, 625, 626, 627, 628, 629, 630, 631, 632, 633, 634, 635, 636, 637, 638, 639, 640, 641, 642, 643, 644, 645, 646, 647, 648, 649, 650, 651, 652, 653, 654, 655, 656, 657, 658, 659, 660, 661, 662, 663, 664, 665, 666, 667, 668, 669, 670, 671, 672, 673, 674, 675, 676, 677, 678, 679, 680, 681, 682, 683, 684, 685, 686, 687, 688, 689, 690, 691, 692, 693, 694, 695, 696, 697, 698, 699, 700, 701, 702, 703, 704, 705, 706, 707, 708, 709, 710, 711, 712, 713, 714, 715, 716, 717, 718, 719, 720, 721, 722, 723, 724, 725, 726, 727, 728, 729, 730, 731, 732, 733, 734, 735, 736, 737, 738, 739, 740, 741, 742, 743, 744, 745, 746, 747, 748, 749, 750, 751, 752, 753, 754, 755, 756, 757, 758, 759, 760, 761, 762, 763, 764, 765, 766, 767, 768, 769, 770, 771, 772, 773, 774, 775, 776, 777, 778, 779, 780, 781, 782, 783, 784, 785, 786, 787, 788, 789, 790, 791, 792, 793, 794, 795, 796, 797, 798, 799, 800, 801, 802, 803, 804, 805, 806, 807, 808, 809, 810, 811, 812, 813, 814, 815, 816, 817, 818, 819, 820, 821, 822, 823, 824, 825, 826, 827, 828, 829, 830, 831, 832, 833, 834, 835, 836, 837, 838, 839, 840, 841, 842, 843, 844, 845, 846, 847, 848, 849, 850, 851, 852, 853, 854, 855, 856, 857, 858, 859, 860, 861, 862, 863, 864, 865, 866, 867, 868, 869, 870, 871, 872, 873, 874, 875, 876, 877, 878, 879, 880, 881, 882, 883, 884, 885, 886, 887, 888, 889, 890, 891, 892, 893, 894, 895, 896, 897, 898, 899, 900, 901, 902, 903, 904, 905, 906, 907, 908, 909, 910, 911, 912, 913, 914, 915, 916, 917, 918, 919, 920, 921, 922, 923, 924, 925, 926, 927, 928, 929, 930, 931, 932, 933, 934, 935, 936, 937, 938, 939, 940, 941, 942, 943, 944, 945, 946, 947, 948, 949, 950, 951, 952, 953, 954, 955, 956, 957, 958, 959, 960, 961, 962, 963, 964, 965, 966, 967, 968, 969, 970, 971, 972, 973, 974, 975, 976, 977, 978, 979, 980, 981, 982, 983, 984, 985, 986, 987, 988, 989, 990, 991, 992, 993, 994, 995, 996, 997, 998, 999, 1000

CALL

Spear & Associates Inc.
REALTORS
122 W. Main, Manchester
428-8388 or 428-8048
Evenings Maria Lehr, 428-8182
or Ellis Pratt, 428-8562

JIM'S TAXIDERM - Game heads, small game, birds, fish, for rugs with head mounting, flat rugs, novelties. Specializing in pheasants. 17700 Old US-12, Chelsea. Ph. 475-2805.

HELP WANTED - Young man to do light construction work. No experience necessary. This will be a temporary full-time job. Qualifycraft, 428-8274.

PERSONALIZED Christmas cards by Hallmark. Chelsea Card & Gift Shop, 116 S. Main. 475-7501.

THREE 10-ACRE BUILDING SITES, between Dexter and 12. Also, three feeder steers, mixed hay and straw. Ph. 428-7492.

RESTAURANT BUSINESS & eqpt. serving breakfast and lunch six days, on busy highway north of Adrian. Call (313) 263-7578 between 6 and 8 p.m.

LIGHT CLEANING and ironing wanted by experienced person. Ph. 475-2027.

FOR SALE - 20 calves, 300 - 500 lbs. 475-8708 after 7 p.m.

WANT ADS

LEHMAN WAHL Land Appraisal Residential and Farm

17001 West Austin Rd.
Manchester, Mich.
Area Code 313
425-8888

Chelsea Associated Builders
Custom Building and Remodeling.
Over 20 years experience.
Call 475-8182.

CALL FRANK for all your carpet cleaning jobs, morning or week-end. Needs only 3 hours to dry. Only 10¢ per square foot. Phone now for free estimate, 761-4228. All work guaranteed.

Get Our 14-POINT FURNACE CHECK - UP Only \$5.50

Now before you really need your heating plant for cold weather - have our trained men check over your plant and put it in tip-top condition. We'll tell you if anything is needed and check:

1. Clean, adjust burner assembly.
2. Adjust fuel input.
3. Check high limit, other controls.
4. Check blower (if warm air).
5. Clean, adjust thermostat.
6. Adjust fan belt (if warm air).
7. Clean, adjust pilot (if needed).
8. Check fuel lines, connections, valves.
9. Check smoke pipe, chimney, etc.
10. Inspect combustion chamber.
11. Lubricate oil bearings.
12. Check transformer and wiring.
13. Clean filters.
14. Check any switches.

INTERNATIONAL COOLING & HEATING
CALL US TODAY

Chelsea Heating Co.
475-2419

House in Country

Lovely 3-bedroom ranch, carpet, fireplace, long black-top driveway, large dog kennel on rolling 10 acres. Upper 60's. Contract available.

Waggoner Real Estate
MARY FIALKOWSKI
426-8834

Fireplace Builder

Field stone mason, block and brick mason, tuck pointing.
FREE ESTIMATES
Call 475-8025 after 3 p.m.

Patrick Grammatico

OFFICE SPACE for rent in Real Estate One building, Main St. Excellent location. Will remodel to satisfy. Call Ed Coy at 475-8693.

FOR SALE - 3 operator beauty salon, Phone 428-8669.

WANT ADS

NOW Full Time Complete Body Shop Service

Stop in For An Estimate

PALMER FORD
223 N. Main St.
475-1301

CUSTOM BUILDING

LICENSED & INSURED FREE ESTIMATES

TOTAL CONSTRUCTION SERVICES

- Residential, commercial and industrial.
- Garages
- Remodeling - Additions
- Aluminum Siding
- Roofing
- Trenching

SLOCUM CONTRACTORS & BUILDERS

Serving Washtenaw County
For Over 20 years
20700 OLD US-12
CHELSEA
Phone 475-8381 or 475-7611

Pine Haven Saddlery
4834 Dexter Township Rd.
Phone Dexter 428-4288

Complete line of English and Western equipment. 10% discount to all 4-H Club members.
Store Hours: Mon.-Sat., 9-9
Sunday, 10-9

NEW and REMODELING Residential Carpenter Contractor
M. A. LAWRENCE
1-517-522-4864

Siding, Roofing and Gutters

Reasonably priced and licensed.

Mills Construction Co.

Call 851-8657
for free estimates.

THE LITTLE FLOWER SHOP

3451 Waltrous Rd., Chelsea
Phone GR 5-8508

We Deliver and Wire
Flowers, Corsages, Arrangements and Plants.

CARPET SQUARES Close Out

QUALITY SHAG
Red - Blue - Green - Gold
Self-adhering - Foam Back
18" x 18"
Each regular \$2.24 (\$8.96 yd.)

Sale \$1.49 (\$5.96 yd.)

MERKEL BROTHERS

BINDERY WORK - Permanent and part-time help needed, day and night shifts. No experience necessary. Apply Adair Printing Co., 7850 Second Ave., Dexter, Mich.

WANTED TO RENT or Lease - Warehouse space, no heat or electricity necessary. Must have truck-high dock. Adair Printing Co., 426-4547.

ALOUETTE DELIVERS - HanCo Winter Sports delivers. Open seven days a week, 9 a.m.-9 p.m., 15901 Seymour Rd., Waterloo area. Phone 475-7212.

BUILDERS - House and barn roofing, all types of roof repairs, aluminum storm windows and doors, aluminum siding and gutters, awnings, porch enclosures, garage and room additions, cement work. Call Joe Hayes for free estimates, Manchester 428-8520.

SHOES FOR REPAIR picked up and delivered every Monday at Parish's Cleaners, 113 Park St., Chelsea, Mich.

FURNISHED HOUSE, 5 rooms. No children or pets. At Cavanaugh Lake. 475-2722 or 761-1222.

WANT ADS

Gem Travel Trailers and Campers

PICK UP COVERS
4' - \$100.00
5' - \$179.00 and up

Triangle Sales
Chelsea 475-4808

CAR RENTAL by the day, week-end, week or month. Full insurance coverage, low rates. Call Lyle Chriswell at Palmer Motor Sales, 475-1301.

Complete Body Repair Service

Bumping - Painting
Windshield and Side Glass Replacement
Free Pick-up & Delivery
Open Monday Until 9
CONTACT DON KNOLL FOR FREE ESTIMATE

Village Motor Sales, Inc.

IMPERIAL - CHRYSLER
DODGE - PLYMOUTH
Phone 475-8881
1185 Manchester Rd., Chelsea
Hours: 9 a.m. to 6 p.m.
Tues. thru Fri. Until 9 Monday.
9 a.m. to 2 p.m. Saturday

PERSONALIZED Christmas cards by Hallmark. Chelsea Card & Gift Shop, 116 S. Main. 475-7501.

MINI-BIKES - Special, \$99.95, \$119.95, \$129.95 and up. Full line of Bikes including the 80 cc's and 100 cc's. Also, 3-wheel ATVs from \$189.95 up. Go-Carts, \$189.95 up. Gemini 50 cc, 80 cc, 125 cc. Over 100 bikes in stock, parts and service on all makes. Open 9-9, Sunday, 12-6. Coffman Sports Center, 1011 Lansing Ave., Jackson, Mich.

FREE ALFALFA - 3 1/2 acres, you cut. Call Al Arbor, 971-7282.

REPAIR SERVICE for household refrigerators, freezers and garbage disposers. Call Bill, 426-8814.

RED WING WORK SHOES

Headquarters for
Foster's Men's Wear

POTATOES - Bring containers. No Sunday sales. 8 miles north of Chelsea on M-52 to right on Boyce and left on 15557 Farnsworth Rd.

FOR REAL DOLLAR SAVINGS be sure and see us before you buy any new or used car. Palmer Motor Sales, Inc. Your Ford Dealer for over 60 years.

HELP Wanted

To reduce my stock of 1974 Admiral color television, 1-year warranty on picture tube, 100% solid state. One year free service, parts and labor.

Service on all makes TV, radio, stereo.
Sales and installation of antenna systems.

PORTER'S TV

212 Buchanan St.
Chelsea, Mich.
Phone 475-8380

PERSONALIZED Christmas cards by Hallmark. Chelsea Card & Gift Shop, 116 S. Main. 475-7501.

FOR SALE - 3-operator beauty salon. Phone 428-8669.

WANTED TO RENT - House to rent in Chelsea School District. References. Husband is cabinet maker; specialty remodeling. Will repair or remodel as part payment if owner desires. Negotiable. Phone 475-1845.

HOUSE FOR SALE in Stockbridge area. 6-room house, on 2 1/2 acres. Full basement, gas heat in Stockbridge area. Call 784-4087 after 3:30 except on week-ends.

DEPENDABLE TREE SERVICE - Cutting and removing. Call 428-4110.

ATTENTION, DEER HUNTERS - The W. W. Weaver Co. Tannery of Reading, Mich. is out of business. We are assuming their clientele. Bring your deer skins to us for tanning. Fast service, reasonable prices. Hides must be in by Dec. 15th. We also buy deer hides. See us at the Cheyenne Bonnet Leather Shop, 137 N. Jackson St., Jackson, Mich.

BEAUTIFUL NEW 3 1/2 bedroom house on 3 1/2 acres, with woods, full walk-out basement, country kitchen or family room, full-length deck overlooking pond, 2-car garage, \$49,500 by builder. Financing available. Ph. 449-4854.

FOR SALE - General Electric refrigerator, works good. Westinghouse electric stove, good condition. Call 475-7594.

FOR SALE - 9-month-old registered white poodle. Good with small children. Call 475-1437.

YOUNG MAN for parts department. Must have good driving record and interested in a permanent future in the automotive business. Call Mr. Bridges, Lloyd Bridges Chevrolet, 475-1347.

WANT ADS

ELECTRICAL WIRING of all types New and rewiring. Ph. 428-4850.

EVINGER REAL ESTATE, Alpine St., Dexter. Phone 428-8518.

SEE US for transit mixed concrete. Klump Bros. Gravel Co. Phone Chelsea 475-2580, 4920 Loveland Rd., Grass Lake, Mich.

TRAVEL TRAILERS - 18-ft. and up; 10x55 ft. trailers. John R. Jones Trailer Sales, Gregory, Mich. Phone 493-2855.

WANTED - Carpentry work, any type. Charles Romine. Ph. 475-7474.

FOR SALE - 1 acre building sites, Chelsea area. Phone 475-2828.

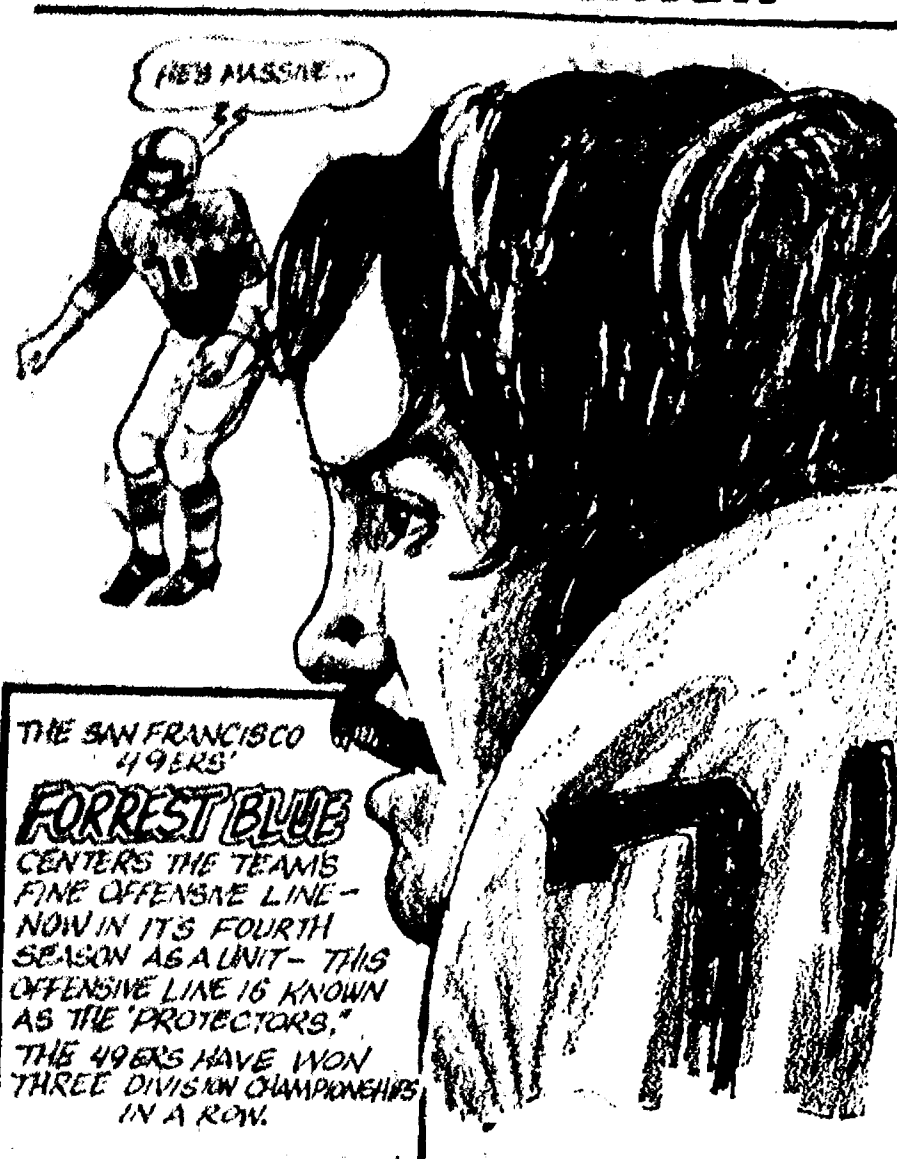
STOCKBRIDGE, 18 acres, commercial, on M-52. (617) 861-8144.

PIANO TUNING, Chelsea and area. Facilities for reconditioning and rebuilding. Used piano sales; reconditioned grands and verticals. E. Ecklund. 426-4429.

ASPHALT PAVING
Driveways - Parking Areas
Landscaping - Site Work
PREVO EXCAVATING CO.
(517) 851-8603 or (313) 453-1027

BOWLING NEWS

SPORTS CORNER



Chelsea Women's Bowling Club

Standings as of Oct. 24

Parish's Cleaners	W	L
Washtenaw Engr. Co.	25	7
Thompson's Pizza	24	8
Chelsea Lanes	22 1/2	9 1/2
Arbor Advertising	21	11
Norris Electric	21	11
Chelsea Grinding	18	14
United Oil Co.	18	14
Chelsea Milling	16 1/2	15 1/2
Heydlauff's	16	16
Jiffy Mixes	14	18
Schneider's Grocery	13	19
Wolverine Lounge	11	21
Bridges Chevrolet	11	21
Jo and Judy's	10 1/2	21 1/2
Larry's Roadside Mkt.	8	24
Rockwell International	7	25
Mark IV	4 1/2	27 1/2

The Chelsea Standard, Thursday, November 1, 1973 13

Social Security Office Has Special Booklet for Women

Nearly one-half of all retired women are getting monthly Social Security retirement checks on their own work records, according to Robert A. Kehoe, district manager of the Social Security office in Ann Arbor. Twenty years ago, only 5 percent of all women 65 and older were getting monthly benefits on their own records. In fact, of the 23 million adult beneficiaries, 13.8 million are women. Fifty-two percent of the entire beneficiary population of all ages are women and their dependents or survivors.

The staff of the Social Security Office in Ann Arbor has prepared a pamphlet entitled "Notes About Social Security of Interest to Women," which presents important information about Social Security from the woman's point of view in her various roles as a worker, wife, mother, widow, divorcee, employer and Medicare beneficiary. The booklet is available free of charge by calling the Ann Arbor Office at 769-7100.

Chelsea Suburban Morning League

Standings as of Oct. 25

Team No. 8	W	L
Chelsea Lanes	19	13
Double A Pro	19	13
Local 157	18	14
Team No. 2	18	14
Team No. 10	18	14
Dana P.T.O.'s	16	16
Harvey's Tavern	15	17
Team No. 5	14	18
Mark IV	14	18
Team No. 7	13	19
Double A Pro No. 2	10	18
High game: J. Rolland, 243.			
High team series: Team No. 8, 887.			

Senior House League

Standings as of Oct. 28

Chelsea Grinding	W	L
Palmer Motor Sales	52	11
Chelsea Cleaners	40	23
Mark IV Lounge	39	24
Jim's Taxidermy	37	26
Sylvan Center	34	28
Schneider's Grocery	32	31
Linear Corp.	32	31
Lloyd Bridges Chevrolet	29	29
Bauer Builders	31	32
Village Motor Sales	31	32
Seitz's Tavern	28	30
Oddballs	30	33
Chelsea Lumber	26	37
Ben's Arco	23	40
Walt's Barber Shop	22	41
Washtenaw Crop Service	21	42
Dexter Automatics	20	43

State Memorial Will Be Constructed Honoring Fr. Marquette

A memorial honoring Fr. Jacques Marquette, the missionary explorer who built at St. Ignace next spring.

The memorial was designed by Michael J. Dul, a Michigan State University graduate in landscape architecture.

Dul's design is simple featuring rough stone, rough hewn timbers designed in an irregularly shaped circular open roofed effect, topped with a wide directional cross and with wide steps rising in free-flow lines toward the open edifice.

The complete design includes an orientation center, an amphitheatre, a theatre museum, an information kiosk and a parking lot.

Construction by the parks division of the Michigan Department of Natural Resources (DNR) is scheduled for completion by 1975 in time for the tercentenary anniversary of Father Marquette's death in 1675.

Telephone Your Club News To 475-1371.

Tri-City Mixed League

Standings as of Oct. 28

Jiffy Mixes	W	L
Four Mobil	25	7
E. P. Smith Pallet Co.	23	9
Real Estate One	20	12
Chelsea Cleaners	18	14
Portage Hardware	18	14
Craft Appliance Co.	17	15
Jerry & Doug's Quality	17	15
The Lively Ones	15 1/2	18 1/2
3-D Sales & Service	15 1/2	18 1/2
Jiffy Market	14	18
4-W's	14	18
Hoover's Hustler's	14	18
Euler & Swersky	13	19
4-B's	12	20
Sprague Bulk & Olds	10 1/2	17 1/2
Detting & Gaddis	10 1/2	17 1/2

Rolling Pin League

Standings as of Oct. 30

Kookie Cutters	W	L
Egg Beaters	24	12
Brooms	22	14
Coffee Cups	21	15
Dish Rags	21	15
Spooners	20	16
Mixers	20	16
Grinders	18	18
Pots	17	19
Mopper Uppers	13	23
Jolly Mops	11	25
Kitchen Kapers	7	29

Chelsea Nite Owl League

Standings as of Oct. 29

Dault & LeVan	W	L
Kirby	25	11
S. Boy Take-out	24	12
Steele Heating	23	13
A. M. Corp.	21	15
Cavanaugh Lake No. 2	21	15
Alber's Orchard	20	16
Ted's Standard	17	19
Chelsea Finance	17	19
Cavanaugh Lake No. 1	16	20
Foster's Men's Wear	15	21
McCalla Mobile Feeds	14	22
Slocum's Construction	14	22
Heller Electric	14	22
Sherlock Homes	14	22
Wahl's Oil	14	22
Pump & Pantry	13	23
Mark IV	13	23

Leisure Time League

Standings as of Oct. 25

Four Stooges	W	L
Misfits	23 1/2	8 1/2
Unpredictables	21	11
Slowpokes	20	12
Sugar Loafers	19 1/2	12 1/2
Roadrunners	19	13
Highly Hopefuls	13	19
Rug Rats	9	23
The G's	8	24
The Lakers	6	27

Charlie Brown & Snoopy's Friends Prep Division

Standings as of Oct. 27

Pin Fighters	W	L
Bulldogs	13	3
Chelsea Champs	10 1/2	5 1/2
Vultures	9	7
Pink Panthers	9	7
Slammers	8	8
Huttmann	7	9
Alley Cats	5	11
Strikers	4 1/2	11 1/2
Chelsea Girls	4	12

Charlie Brown's Peanut League

Standings as of Oct. 27

Super Strikers	W	L
All Stars	9	7
Pin Crackers	8 1/2	7 1/2
Fire Balls	8	8
Pin Pushers	6	10
Sore Thumbs	5 1/2	10 1/2

YES

WE ARE MAKING LONG-TERM FARM REAL ESTATE LOANS

SEE US

Federal LAND BANK

P. O. Box 1006
Ph. 769-2411 8645 Jackson Rd.
Ann Arbor, Mich. 48103

SOUTHERN BOY MANOR MOTEL

Efficiency Units - By Day, Week, or Month

13190 M-52
(2 miles south of Stockbridge)
PHONE (517) 851-4213

Have Lunch Today at the

MARK IV LOUNGE

PLEASANT - AIR-CONDITIONED ADULTS

Have A Ball GO BOWLING THIS WEEKEND!

Open Bowling Schedule

Sunday	12 noon - 8:00 p.m.
Monday	10:30 a.m. - 6:30 p.m.
Tuesday	9:00 a.m. - 6:30 p.m.
Wednesday	10:30 a.m. - 6:30 p.m.
Thursday	10:00 a.m. - 6:30 p.m.
Friday	10:30 a.m. - 6:30 p.m.
Saturday	11:00 a.m. - midnight

18 Astroline Lanes - Billiards & Air Hockey LOUNGE

CHELSEA LANES, Inc.

PHONE 475-8141

1159 M-52 - CHELSEA

At Village Motor Sales, Inc., Chrysler-Plymouth

Hey, have we got a show for you!

Introducing the new '74 Plymouths.

You want to see a show you can take home with you? Come on in, we'll show you new Plymouths like you've never seen before. Newly styled Furs, mid-size Satellites, economy Dusters. We'll show you cars that run on regular gas. Cars with electronic ignition. Cars with a heritage of great engineering.

CHRYSLER Plymouth

'74 Plymouth Satellite Sebring-Plus 2-Door Hardtop

'74 Plymouth Gold Duster

C'mon in! See our new Plymouths.

AUTHORIZED DEALER **CHRYSLER** MOTORS CORPORATION

VILLAGE MOTOR SALES, INC.

1185 MANCHESTER ROAD CHELSEA, MICHIGAN

Gridders of the Week



RYAN RIFE (83) is a 6'2", 165-lb. junior end presently playing his first year of varsity football. The grunting practice season for football will just barely end when Ryan will have to begin practicing for basketball, he noted. In his spare time, which must be at a premium, Ryan enjoys motorcycling and canoeing. He lives with his parents, Mr. and Mrs. Ronald Rife, and his brothers and sisters, Jeff, 13, the manager of the 8th grade football team; Sherry, 12; Karen, 9; and David, 7, at 6000 Maier Rd.

JACK HACKWORTH (88) is a 5'11", 180-lb. junior end playing his first year of varsity football. Immediately after football season's finale, Jack also will be back in competition with tryouts for basketball. He is an avid motorcyclist and the owner of a 250 cc. trail bike. He lives at home with his parents, Mr. and Mrs. Duane Gullett, and a sister, Kitty, 15.

Senator Bursley Named to National Task Force

Senator Gilbert E. Bursley (R-Ann Arbor), has been appointed vice-chairman of the Education Task Force of the Intergovernmental Relations Committee of the National Legislative Conference.

Senator Bursley, chairman of the Senate Education Committee and Assistant Majority Leader of the Senate was the author and namesake of Michigan's drastically revised, new state aid act. The Bursley Act is being studied extensively as a model for other states contemplating similar reform

and will be examined in detail at a national symposium on state finance reform to be held in Washington by the U.S. Office of Education on Nov. 26 and 27.

Telephone Your Club News To 475-1371

Novi Wraps Up SEC Title With 7-0 Record

Novi's Wildcats wrapped up their second consecutive Southeastern Conference title Friday night with a 48-0 crushing of Lincoln's lowly Railspitters.

Eric Hanson paced the Wildcats' attack, as he rushed for 225 yards and scored three touchdowns on runs of 15, two, and one yards. In other spectacular plays, David Brown, Wildcat quarterback, passed 30 yards to Mike Riley for one touchdown, and defensive end Bill Hart intercepted a misguided Lincoln pass and returned it 50 yards for another six points. Kevin LaFleche also tallied for the Novi team.

The win put Novi at 7-0 for the season, with an undefeated season their goal now that the title race has been eliminated as a source of team inspiration. The loss put Lincoln at 2-5 for the year.

In Chelsea, the Bulldogs took their normally staid game plan and transformed it into an exciting air attack that doomed Milan to another year without a Southeastern Conference title, 23-14.

Milan, too, took to the air, but with decidedly less evidence of success: for the same yardage, 105 yards, Chelsea threw four times and completed all four, while Milan completed nine of 22. In South Lyon, the Lions unspontaneously inflicted the accumulated

frustrations from their last-minute loss to Chelsea the week before on the flailing Dexter Dreadnaughts, whose record dipped to 0-7.

Quarterback Tony Kern led the 35-13 South Lyon effort by completing nine of 16 passes for 203 yards and two touchdowns, and also ran one on his own.

The Brighton-Saline contest, of little league consequence to any one but the two participants, ended with Saline on top, 12-6.

Doug Peck and Calvin Feldkamp scored the touchdowns, but a freshman middle guard named Jim Hneussler was credited by Coach Merv Ward with "keeping us in the game in the first half." He managed eight solo tackles and five assists, in addition to recovering a fumble and smacking down an errant pass.

The Saline victory put the Hornets at 3-3 and Brighton at 2-5.

SOUTHEASTERN CONFERENCE Standings as of Oct. 27

	W	L	T
Novi	7	0	0
Chelsea	5	1	1
Milan	5	2	0
South Lyon	4	3	0
Saline	3	3	1
Brighton	2	5	0
Lincoln	2	5	0
Dexter	0	7	0

Cross Country Team Tied for League Lead

Chelsea harriers ended their dual meet season with a 21-34 defeat of Dexter last Thursday that kept them lodged in a three-way tie for first place in the Southeastern Conference.

At 4-1 for the season, the Bulldog runners were tied with Saline and South Lyon prior to the league meet last night, which occurred after press-time. Dual meets count half in the season's competition, and the league meet the other half. A Chelsea win last night would give the local team the conference title.

In the Dexter meet, Dreadnaught runner Bruce Vail took first place with a time of 17:14; Jim Storey placed second with 17:27; Jeff Sprague, third, with 17:48; John Storey, fourth, with 18:01; Doug Schrotenboer, fifth, with 18:28; and Rick Haller, seventh, with 18:41. Also running a fine race was Bill Rademacher, who placed 11th with 19:11.

At the regional meet Saturday at Lansing Eastern High school,

Chelsea finished ninth in a field of 17 teams, outpacing all teams from the Southeastern Conference. Once again amazing Lumen Christi topped the pack, with 53 points, followed by Jackson Northwest with 103. Coach Pat Clarke pointedly noted that these two "really tough" teams are ones the Bulldogs have faced this season.

Placings for Chelsea included the familiar line-up of Bulldog runners: Jim Storey placed 18th, with 18:09; Jeff Sprague, 27th, with 18:21; John Storey, 42nd, with 18:34; Rick Haller, 78th, with 17:17; Phil Frame, 83rd, with 17:26; and Bill Rademacher, 106th, with 18:39.

Frosh Grid Team Loses To Dexter, 30-6

The freshmen found out Tuesday that heart and spirit are not enough, you need the size to go with it. They lost to a bigger Dexter team, 30-6.

Chelsea came out hitting hard but gave up an early TD. They came battling back and scored on a long run by Mike Check. At the end of the first quarter the score was Dexter 6, Chelsea 0.

The second quarter belonged to the defenses. Neither team could move against the hard-hitting and gang tackling shown. The game was starting to look like a typical Chelsea-Dexter battle.

Chelsea's defense held until midway in the third period when Dexter scored on a sweep to up it to 16-6. The flood gates really opened in the fourth quarter when Dexter's size began to take its toll. The Dreadnaughts added two more TDs to make the final 30-6.

The Frosh had some fine running again from Mike Check and Bruce Stubbs. Defensively Dale Headrich led in tackles, followed by Mike Check and Pete Feehey. This was the final freshmen game of the season.

Letters to the Editor

To the Editor:
Chelsea Band Boosters have had an internal problem this year with calendars. Since Sept. 1 we have worked hard to solve this and now believe that we have completed our deliveries. At this time we believe that all monies are accounted for.

Our greatest concern has been not to alienate you people from future projects for the good of the band and other worthwhile causes in the School District.

If anyone or any clubs have not received calendars, please notify Phil Hume at 475-2861.

Phil Hume.

CHELSEA FINANCE CORP.

\$25 to \$1,500

For Any Worthwhile Purpose

See or Call
FRANK HILL
at 475-8631

111 PARK STREET
CHELSEA, MICH.



AT EQUINOX TEEN CENTER, the scaries were certainly on tap for the past four days, from Sunday to Wednesday, when the former parsonage of the United Methodist church was transformed into a haunted house in the spirit of the season. Above, Frankenstein (Rod Sheerin) and Henry

Harat share in mock bereavement before one of the creepier items in the house, a funeral room complete with both the necessities (casket and body) and also a few extra addeds, like bats, generally suspicious lighting and shake-in-your-shoes noises.

NEW DRINK?

Have you heard about the new Senatorial Cocktail that's sweeping Washington, D. C.? Drink three of them and you wind up speaking from the floor!

MICHIGAN CHRISTMAS TREES \$9 IN THE ARCTIC?

It's no threat to the environment to buy plantation grown Christmas trees from Michigan. They're planted and harvested just like any other crop.

In the summer, nine-tenths of the Arctic's lands lose their covering of ice and snow; temperatures may rise as high as 90 degrees F.

Want a good...low cost dryer?

MAYTAG Permanent Press DRYER

WHILE THEY LAST \$189⁹⁵



Terrific Features!

- Permanent Press, Regular and Air Fluff cycles
- Famous Maytag Halo-of-Heat drying eliminates "hot spots"
- Large porcelain enamel drum with easy to clean lint filter
- Zinc coated steel cabinet with tough acrylic enamel finish

Maytag Dependability-the most important feature of all!

HEYDLAUFF'S

113 North Main, Chelsea

Phone 475-1221

DRIVE A WINNER!

Come in now and drive the all-new, rugged Chevy trucks for 1974!



El Camino SS



C-10 Fleetside Super Pickup

The all-new EL CAMINO is America's sportiest truck, that is rugged but drives like a sports car... and at a compact price.

The rugged FLEETSIDE pickup is built tough and sturdy but it rides and handles like a luxury car... at a low price.

Chevy trucks traditionally have the highest resale value.

COME IN TODAY - WE NEED TRADES!

LLOYD BRIDGES CHEVROLET

SALES HOURS:

Monday & Thursday 8:00 a.m. - 8:30 p.m.
Tuesday, Wednesday, Friday 8:00 a.m. - 6:00 p.m.
Saturday 8:00 a.m. - 1:00 p.m.

475-1373

CHELSEA, MICH.